

Datasheet for ABIN1539498  
**anti-PAIP2 antibody (N-Term)**

## 2 Images

[Go to Product page](#)

## Overview

Quantity:	400 µL
Target:	PAIP2
Binding Specificity:	AA 7-34, N-Term
Reactivity:	Human
Host:	Rabbit
Clonality:	Polyclonal
Application:	Western Blotting (WB)

## Product Details

Immunogen:	This PAIP2 antibody is generated from rabbits immunized with a KLH conjugated synthetic peptide between 7-34 amino acids from the N-terminal region of human PAIP2.
Clone:	RB30366
Isotype:	Ig Fraction
Predicted Reactivity:	B, C
Purification:	This antibody is purified through a protein A column, followed by peptide affinity purification.

## Target Details

Target:	PAIP2
Alternative Name:	PAIP2 ( <a href="#">PAIP2 Products</a> )
Background:	PAIP2 acts as a repressor in the regulation of translation initiation of poly(A)-containing

## Target Details

mRNAs. Its inhibitory activity on translation is mediated via its action on PABPC1. Displaces the interaction of PABPC1 with poly(A) RNA and competes with PAIP1 for binding to PABPC1. Its association with PABPC1 results in disruption of the cytoplasmic poly(A) RNP structure organization.

Molecular Weight: 14984

Gene ID: 51247

NCBI Accession: [NP\\_001028284](#), [NP\\_057564](#)

UniProt: [Q9BPZ3](#)

## Application Details

Application Notes: WB: 1:1000. WB: 1:1000

Restrictions: For Research Use only

## Handling

Format: Liquid

Buffer: Purified polyclonal antibody supplied in PBS with 0.09 % (W/V) sodium azide.

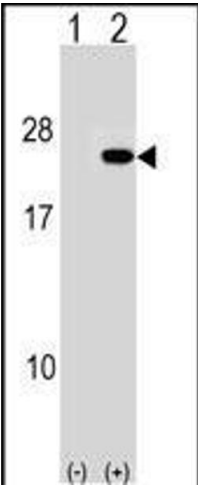
Preservative: Sodium azide

Precaution of Use: This product contains Sodium azide: a POISONOUS AND HAZARDOUS SUBSTANCE which should be handled by trained staff only.

Storage: 4 °C, -20 °C

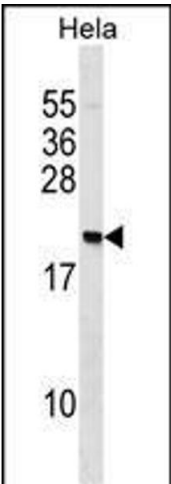
Storage Comment: PAIP2 Antibody (N-term) can be refrigerated at 2-8 °C for up to 6 months. For long term storage, keep at -20 °C.

Expiry Date: 6 months



Western Blotting

**Image 1.** Western blot analysis of IP2 (arrow) using rabbit polyclonal IP2 Antibody (N-term) (ABIN1539498 and ABIN2848464). 293 cell lysates (2 µg/lane) either nontransfected (Lane 1) or transiently transfected (Lane 2) with the IP2 gene.



Western Blotting

**Image 2.** IP2 Antibody (N-term) (ABIN1539498 and ABIN2848464) western blot analysis in HeLa cell line lysates (35 µg/lane). This demonstrates the IP2 antibody detected the IP2 protein (arrow).