



[Go to Product page](#)

Datasheet for ABIN1539514
anti-PPP2R5D antibody (N-Term)

1 Image

Overview

Quantity:	400 µL
Target:	PPP2R5D
Binding Specificity:	AA 63-91, N-Term
Reactivity:	Human
Host:	Rabbit
Clonality:	Polyclonal
Conjugate:	This PPP2R5D antibody is un-conjugated
Application:	Western Blotting (WB)

Product Details

Immunogen:	This PPP2R5D antibody is generated from rabbits immunized with a KLH conjugated synthetic peptide between 63-91 amino acids from the N-terminal region of human PPP2R5D.
Clone:	RB40232
Isotype:	Ig Fraction
Predicted Reactivity:	Rb
Purification:	This antibody is purified through a protein A column, followed by peptide affinity purification.

Target Details

Target:	PPP2R5D
Alternative Name:	PPP2R5D (PPP2R5D Products)

Target Details

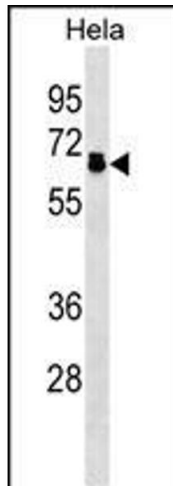
Background:	The product of this gene belongs to the phosphatase 2A regulatory subunit B family. Protein phosphatase 2A is one of the four major Ser/Thr phosphatases, and it is implicated in the negative control of cell growth and division. It consists of a common heteromeric core enzyme, which is composed of a catalytic subunit and a constant regulatory subunit, that associates with a variety of regulatory subunits. The B regulatory subunit might modulate substrate selectivity and catalytic activity. This gene encodes a delta isoform of the regulatory subunit B56 subfamily. Alternatively spliced transcript variants encoding different isoforms have been identified.
Molecular Weight:	69992
Gene ID:	5528
NCBI Accession:	NP_001257405 , NP_006236 , NP_851307 , NP_851308
UniProt:	Q14738
Pathways:	PI3K-Akt Signaling , Activation of Innate immune Response , Toll-Like Receptors Cascades

Application Details

Application Notes:	WB: 1:1000
Restrictions:	For Research Use only

Handling

Format:	Liquid
Buffer:	Purified polyclonal antibody supplied in PBS with 0.09 % (W/V) sodium azide.
Preservative:	Sodium azide
Precaution of Use:	This product contains Sodium azide: a POISONOUS AND HAZARDOUS SUBSTANCE which should be handled by trained staff only.
Storage:	4 °C, -20 °C
Storage Comment:	PPP2R5D Antibody (N-term) can be refrigerated at 2-8 °C for up to 6 months. For long term storage, keep at -20 °C.
Expiry Date:	6 months



Western Blotting

Image 1. P2R5D Antibody (N-term) (ABIN1539514 and ABIN2838324) western blot analysis in HeLa cell line lysates (35 µg/lane). This demonstrates the P2R5D antibody detected the P2R5D protein (arrow).