

Datasheet for ABIN1539522  
**anti-Keratin 75 antibody (N-Term)**[Go to Product page](#)

## 1 Image

## Overview

Quantity:	400 µL
Target:	Keratin 75 (KRT75)
Binding Specificity:	AA 66-92, N-Term
Reactivity:	Human
Host:	Rabbit
Clonality:	Polyclonal
Application:	Western Blotting (WB)

## Product Details

Immunogen:	This KRT75 antibody is generated from rabbits immunized with a KLH conjugated synthetic peptide between 66-92 amino acids from the N-terminal region of human KRT75.
Clone:	RB36469
Isotype:	Ig Fraction
Purification:	This antibody is purified through a protein A column, followed by peptide affinity purification.

## Target Details

Target:	Keratin 75 (KRT75)
Alternative Name:	KRT75 ( <a href="#">KRT75 Products</a> )
Background:	This gene is a member of the type II keratin family clustered on the long arm of chromosome 12. Type I and type II keratins heteropolymerize to form intermediate-sized filaments in the cytoplasm of epithelial cells. This gene is expressed in the companion layer, upper germinative

## Target Details

matrix region of the hair follicle, and medulla of the hair shaft. The encoded protein plays an essential role in hair and nail formation. Variations in this gene have been associated with the hair disorders pseudofolliculitis barbae (PFB) and loose anagen hair syndrome (LAHS).

Molecular Weight: 59560

Gene ID: 9119

NCBI Accession: [NP\\_004684](#)

UniProt: [O95678](#)

## Application Details

Application Notes: WB: 1:1000

Restrictions: For Research Use only

## Handling

Format: Liquid

Buffer: Purified polyclonal antibody supplied in PBS with 0.09 % (W/V) sodium azide.

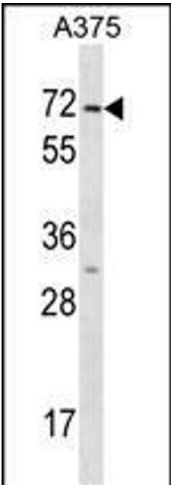
Preservative: Sodium azide

Precaution of Use: This product contains Sodium azide: a POISONOUS AND HAZARDOUS SUBSTANCE which should be handled by trained staff only.

Storage: 4 °C, -20 °C

Storage Comment: KRT75 Antibody (N-term) can be refrigerated at 2-8 °C for up to 6 months. For long term storage, keep at -20 °C.

Expiry Date: 6 months



Western Blotting

**Image 1.** KRT75 Antibody (N-term) (ABIN1539522 and ABIN2848502) western blot analysis in cell line lysates (35 µg/lane). This demonstrates the KRT75 antibody detected the KRT75 protein (arrow).