

Datasheet for ABIN1539544
anti-GAS2 antibody (N-Term)[Go to Product page](#)

1 Image

Overview

Quantity:	400 µL
Target:	GAS2
Binding Specificity:	AA 68-94, N-Term
Reactivity:	Human
Host:	Rabbit
Clonality:	Polyclonal
Application:	Western Blotting (WB)

Product Details

Immunogen:	This GAS2 antibody is generated from rabbits immunized with a KLH conjugated synthetic peptide between 68-94 amino acids from the N-terminal region of human GAS2.
Clone:	RB30511
Isotype:	Ig Fraction
Purification:	This antibody is purified through a protein A column, followed by peptide affinity purification.

Target Details

Target:	GAS2
Alternative Name:	GAS2 (GAS2 Products)
Background:	The protein encoded by this gene is a caspase-3 substrate that plays a role in regulating microfilament and cell shape changes during apoptosis. It can also modulate cell susceptibility to p53-dependent apoptosis by inhibiting calpain activity. Multiple alternatively spliced variants,

Target Details

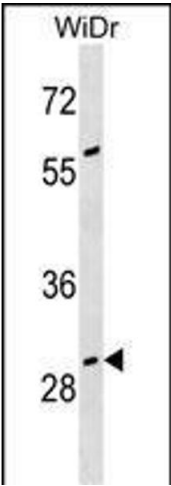
	encoding the same protein, have been identified.
Molecular Weight:	34945
Gene ID:	2620
NCBI Accession:	NP_001137302 , NP_005247 , NP_808221
UniProt:	O43903
Pathways:	Caspase Cascade in Apoptosis

Application Details

Application Notes:	WB: 1:1000
Restrictions:	For Research Use only

Handling

Format:	Liquid
Buffer:	Purified polyclonal antibody supplied in PBS with 0.09 % (W/V) sodium azide.
Preservative:	Sodium azide
Precaution of Use:	This product contains Sodium azide: a POISONOUS AND HAZARDOUS SUBSTANCE which should be handled by trained staff only.
Storage:	4 °C,-20 °C
Storage Comment:	GAS2 Antibody (N-term) can be refrigerated at 2-8 °C for up to 6 months. For long term storage, keep at -20 °C.
Expiry Date:	6 months



Western Blotting

Image 1. GAS2 Antibody (N-term) (ABIN1539544 and ABIN2850315) western blot analysis in WiDr cell line lysates (35 µg/lane). This demonstrates the GAS2 antibody detected the GAS2 protein (arrow).