



[Go to Product page](#)

Datasheet for ABIN1539551  
**anti-PPAPDC2 antibody (N-Term)**

1 Image

### Overview

Quantity:	400 µL
Target:	PPAPDC2
Binding Specificity:	AA 70-96, N-Term
Reactivity:	Human
Host:	Rabbit
Clonality:	Polyclonal
Application:	Western Blotting (WB)

### Product Details

Immunogen:	This PPAPDC2 antibody is generated from rabbits immunized with a KLH conjugated synthetic peptide between 70-96 amino acids from the N-terminal region of human PPAPDC2.
Clone:	RB37965
Isotype:	Ig Fraction
Purification:	This antibody is purified through a protein A column, followed by peptide affinity purification.

### Target Details

Target:	PPAPDC2
Alternative Name:	PPAPDC2 ( <a href="#">PPAPDC2 Products</a> )
Background:	Phosphatase that dephosphorylates presqualene diphosphate (PSDP) into presqualene monophosphate (PSMP), suggesting that it may be indirectly involved in innate immunity. PSDP is a bioactive lipid that rapidly remodels to presqualene monophosphate PSMP upon cell

## Target Details

---

activation. Displays diphosphate phosphatase activity with a substrate preference for PSDP > FDP > phosphatidic acid.

Molecular Weight: 32194

Gene ID: 403313

NCBI Accession: [NP\\_982278](#)

UniProt: [Q8IY26](#)

## Application Details

---

Application Notes: WB: 1:1000

Restrictions: For Research Use only

## Handling

---

Format: Liquid

Buffer: Purified polyclonal antibody supplied in PBS with 0.09 % (W/V) sodium azide.

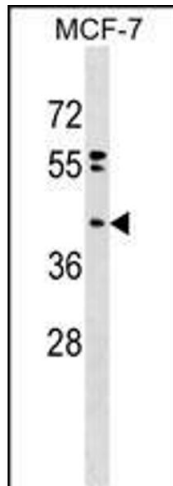
Preservative: Sodium azide

Precaution of Use: This product contains Sodium azide: a POISONOUS AND HAZARDOUS SUBSTANCE which should be handled by trained staff only.

Storage: 4 °C, -20 °C

Storage Comment: PPAPDC2 Antibody (N-term) can be refrigerated at 2-8 °C for up to 6 months. For long term storage, keep at -20 °C.

Expiry Date: 6 months



### Western Blotting

**Image 1.** DC2 Antibody (N-term) 17641a western blot analysis in MCF-7 cell line lysates (35 µg/lane). This demonstrates the DC2 antibody detected the DC2 protein (arrow).