

Datasheet for ABIN1539553  
**anti-MRPL1 antibody (N-Term)**[Go to Product page](#)

## 1 Image

## Overview

Quantity:	400 µL
Target:	MRPL1
Binding Specificity:	AA 70-97, N-Term
Reactivity:	Human
Host:	Rabbit
Clonality:	Polyclonal
Application:	Western Blotting (WB)

## Product Details

Immunogen:	This MRPL1 antibody is generated from rabbits immunized with a KLH conjugated synthetic peptide between 70-97 amino acids from the N-terminal region of human MRPL1.
Clone:	RB36528
Isotype:	Ig Fraction
Predicted Reactivity:	B
Purification:	This antibody is purified through a protein A column, followed by peptide affinity purification.

## Target Details

Target:	MRPL1
Alternative Name:	MRPL1 ( <a href="#">MRPL1 Products</a> )
Background:	Mammalian mitochondrial ribosomal proteins are encoded by nuclear genes and help in protein

## Target Details

synthesis within the mitochondrion. Mitochondrial ribosomes (mitoribosomes) consist of a small 28S subunit and a large 39S subunit. They have an estimated 75 % protein to rRNA composition compared to prokaryotic ribosomes, where this ratio is reversed. Another difference between mammalian mitoribosomes and prokaryotic ribosomes is that the latter contain a 5S rRNA. Among different species, the proteins comprising the mitoribosome differ greatly in sequence, and sometimes in biochemical properties, which prevents easy recognition by sequence homology. This gene encodes a 39S subunit protein that belongs to the L1 ribosomal protein family.

Molecular Weight:	36909
-------------------	-------

Gene ID:	65008
----------	-------

NCBI Accession:	<a href="#">NP_064621</a>
-----------------	---------------------------

UniProt:	<a href="#">Q9BYD6</a>
----------	------------------------

## Application Details

Application Notes:	WB: 1:1000
--------------------	------------

Restrictions:	For Research Use only
---------------	-----------------------

## Handling

Format:	Liquid
---------	--------

Buffer:	Purified polyclonal antibody supplied in PBS with 0.09 % (W/V) sodium azide.
---------	--

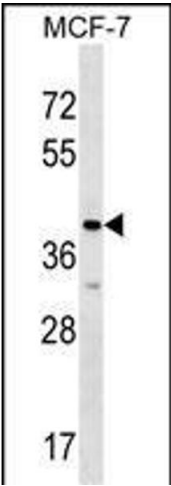
Preservative:	Sodium azide
---------------	--------------

Precaution of Use:	This product contains Sodium azide: a POISONOUS AND HAZARDOUS SUBSTANCE which should be handled by trained staff only.
--------------------	--

Storage:	4 °C,-20 °C
----------	-------------

Storage Comment:	MRPL1 Antibody (N-term) can be refrigerated at 2-8 °C for up to 6 months. For long term storage, keep at -20 °C.
------------------	--

Expiry Date:	6 months
--------------	----------



Western Blotting

**Image 1.** MRPL1 Antibody (N-term) (ABIN1539553 and ABIN2848606) western blot analysis in MCF-7 cell line lysates (35 µg/lane). This demonstrates the MRPL1 antibody detected the MRPL1 protein (arrow).