



Datasheet for ABIN1539555 **anti-CIB3 antibody (N-Term)**



[Go to Product page](#)

1 Image

Overview

Quantity:	400 µL
Target:	CIB3
Binding Specificity:	AA 8-34, N-Term
Reactivity:	Human
Host:	Rabbit
Clonality:	Polyclonal
Application:	Western Blotting (WB)

Product Details

Immunogen:	This CIB3 antibody is generated from rabbits immunized with a KLH conjugated synthetic peptide between 8-34 amino acids from the N-terminal region of human CIB3.
Clone:	RB38207
Isotype:	Ig Fraction
Purification:	This antibody is purified through a protein A column, followed by peptide affinity purification.

Target Details

Target:	CIB3
Alternative Name:	CIB3 (CIB3 Products)
Background:	This gene product shares a high degree of sequence similarity with DNA-dependent protein kinase catalytic subunit-interacting protein 2 in human and mouse, and like them may bind the catalytic subunit of DNA-dependent protein kinases. The exact function of this gene is not

Target Details

known.

Molecular Weight: 21802

Gene ID: 117286

NCBI Accession: [NP_473454](#)

UniProt: [Q96Q77](#)

Application Details

Application Notes: WB: 1:1000

Restrictions: For Research Use only

Handling

Format: Liquid

Buffer: Purified polyclonal antibody supplied in PBS with 0.09 % (W/V) sodium azide.

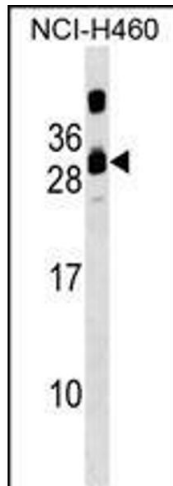
Preservative: Sodium azide

Precaution of Use: This product contains Sodium azide: a POISONOUS AND HAZARDOUS SUBSTANCE which should be handled by trained staff only.

Storage: 4 °C,-20 °C

Storage Comment: CIB3 Antibody (N-term) can be refrigerated at 2-8 °C for up to 6 months. For long term storage, keep at -20 °C.

Expiry Date: 6 months



Western Blotting

Image 1. CIB3 Antibody (N-term) (ABIN1539555 and ABIN2849468) western blot analysis in NCI- cell line lysates (35 µg/lane). This demonstrates the CIB3 antibody detected the CIB3 protein (arrow).