

Datasheet for ABIN1539556  
**anti-BCL7C antibody (N-Term)**[Go to Product page](#)

## 1 Image

## Overview

Quantity:	400 µL
Target:	BCL7C
Binding Specificity:	AA 8-34, N-Term
Reactivity:	Human
Host:	Rabbit
Clonality:	Polyclonal
Conjugate:	This BCL7C antibody is un-conjugated
Application:	Western Blotting (WB)

## Product Details

Immunogen:	This BCL7C antibody is generated from rabbits immunized with a KLH conjugated synthetic peptide between 8-34 amino acids from the N-terminal region of human BCL7C.
Clone:	RB37588
Isotype:	Ig Fraction
Predicted Reactivity:	M
Purification:	This antibody is purified through a protein A column, followed by peptide affinity purification.

## Target Details

Target:	BCL7C
Alternative Name:	BCL7C ( <a href="#">BCL7C Products</a> )

## Target Details

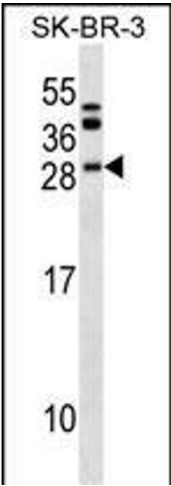
Background:	This gene is identified by the similarity of its product to the N-terminal region of BCL7A protein. The BCL7A protein is encoded by the gene known to be directly involved in a three-way gene translocation in a Burkitt lymphoma cell line. The function of this gene has not yet been determined.
Molecular Weight:	23468
Gene ID:	9274
NCBI Accession:	<a href="#">NP_004756</a>
UniProt:	<a href="#">Q8WUZ0</a>

## Application Details

Application Notes:	WB: 1:1000
Restrictions:	For Research Use only

## Handling

Format:	Liquid
Buffer:	Purified polyclonal antibody supplied in PBS with 0.09 % (W/V) sodium azide.
Preservative:	Sodium azide
Precaution of Use:	This product contains Sodium azide: a POISONOUS AND HAZARDOUS SUBSTANCE which should be handled by trained staff only.
Storage:	4 °C, -20 °C
Storage Comment:	BCL7C Antibody (N-term) can be refrigerated at 2-8 °C for up to 6 months. For long term storage, keep at -20 °C.
Expiry Date:	6 months



Western Blotting

**Image 1.** BCL7C Antibody (N-term) (ABIN1539556 and ABIN2849559) western blot analysis in SK-BR-3 cell line lysates (35 µg/lane). This demonstrates the BCL7C antibody detected the BCL7C protein (arrow).