

Datasheet for ABIN1539563
anti-RSRC2 antibody (N-Term)[Go to Product page](#)

1 Image

Overview

Quantity:	400 µL
Target:	RSRC2
Binding Specificity:	AA 8-37, N-Term
Reactivity:	Human
Host:	Rabbit
Clonality:	Polyclonal
Application:	Western Blotting (WB)

Product Details

Immunogen:	This RSRC2 antibody is generated from rabbits immunized with a KLH conjugated synthetic peptide between 8-37 amino acids from the N-terminal region of human RSRC2.
Clone:	RB37755
Isotype:	Ig Fraction
Purification:	This antibody is purified through a protein A column, followed by peptide affinity purification.

Target Details

Target:	RSRC2
Alternative Name:	RSRC2 (RSRC2 Products)
Background:	RSRC2 (arginine/serine-rich coiled-coil 2) possibly plays a role in cell proliferation and may be a novel tumor suppressor of esophageal cancer cell growth.

Target Details

Molecular Weight:	50560
Gene ID:	65117
NCBI Accession:	NP_075388
UniProt:	Q7L4I2

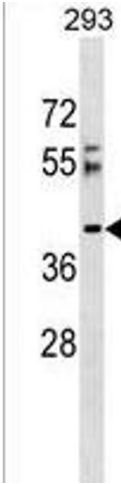
Application Details

Application Notes:	WB: 1:1000
Restrictions:	For Research Use only

Handling

Format:	Liquid
Buffer:	Purified polyclonal antibody supplied in PBS with 0.09 % (W/V) sodium azide.
Preservative:	Sodium azide
Precaution of Use:	This product contains Sodium azide: a POISONOUS AND HAZARDOUS SUBSTANCE which should be handled by trained staff only.
Storage:	4 °C, -20 °C
Storage Comment:	RSRC2 Antibody (N-term) can be refrigerated at 2-8 °C for up to 6 months. For long term storage, keep at -20 °C.
Expiry Date:	6 months

Images



Western Blotting

Image 1. RSRC2 Antibody (N-term) (ABIN1539563 and ABIN2849285) western blot analysis in 293 cell line lysates (35 µg/lane). This demonstrates the RSRC2 antibody detected the RSRC2 protein (arrow).