



[Go to Product page](#)

Datasheet for ABIN1539575  
**anti-ELAC1 antibody (N-Term)**

1 Image

### Overview

Quantity:	400 µL
Target:	ELAC1
Binding Specificity:	AA 73-101, N-Term
Reactivity:	Human
Host:	Rabbit
Clonality:	Polyclonal
Application:	Western Blotting (WB)

### Product Details

Immunogen:	This ELAC1 antibody is generated from rabbits immunized with a KLH conjugated synthetic peptide between 73-101 amino acids from the N-terminal region of human ELAC1.
Clone:	RB37225
Isotype:	Ig Fraction
Predicted Reactivity:	B
Purification:	This antibody is purified through a protein A column, followed by peptide affinity purification.

### Target Details

Target:	ELAC1
Alternative Name:	ELAC1 ( <a href="#">ELAC1 Products</a> )
Background:	Zinc phosphodiesterase, which displays some tRNA 3'-processing endonuclease activity.

## Target Details

---

Probably involved in tRNA maturation, by removing a 3'-trailer from precursor tRNA.

Molecular Weight: 40019

Gene ID: 55520

NCBI Accession: [NP\\_061166](#)

UniProt: [Q9H777](#)

## Application Details

---

Application Notes: WB: 1:1000

Restrictions: For Research Use only

## Handling

---

Format: Liquid

Buffer: Purified polyclonal antibody supplied in PBS with 0.09 % (W/V) sodium azide.

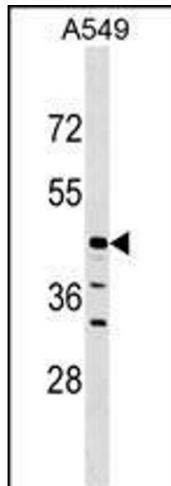
Preservative: Sodium azide

Precaution of Use: This product contains Sodium azide: a POISONOUS AND HAZARDOUS SUBSTANCE which should be handled by trained staff only.

Storage: 4 °C, -20 °C

Storage Comment: ELAC1 Antibody (N-term) can be refrigerated at 2-8 °C for up to 6 months. For long term storage, keep at -20 °C.

Expiry Date: 6 months



### Western Blotting

**Image 1.** ELAC1 Antibody (N-term) (ABIN1539575 and ABIN2849163) western blot analysis in A549 cell line lysates (35 µg/lane). This demonstrates the ELAC1 antibody detected the ELAC1 protein (arrow).