

Datasheet for ABIN1539587
anti-SLC2A9 antibody (N-Term)[Go to Product page](#)

1 Image

Overview

Quantity:	400 µL
Target:	SLC2A9
Binding Specificity:	AA 75-104, N-Term
Reactivity:	Human
Host:	Rabbit
Clonality:	Polyclonal
Application:	Western Blotting (WB)

Product Details

Immunogen:	This SLC2A9 antibody is generated from rabbits immunized with a KLH conjugated synthetic peptide between 75-104 amino acids from the N-terminal region of human SLC2A9.
Clone:	RB30332
Isotype:	Ig Fraction
Purification:	This antibody is purified through a protein A column, followed by peptide affinity purification.

Target Details

Target:	SLC2A9
Alternative Name:	SLC2A9 (SLC2A9 Products)
Background:	This gene encodes a member of the SLC2A facilitative glucose transporter family. Members of this family play a significant role in maintaining glucose homeostasis. The encoded protein may play a role in the development and survival of chondrocytes in cartilage matrices. Two

Target Details

transcript variants encoding distinct isoforms have been identified for this gene.

Molecular Weight: 58702

Gene ID: 56606

NCBI Accession: [NP_001001290](#), [NP_064425](#)

UniProt: [Q9NRM0](#)

Application Details

Application Notes: WB: 1:1000

Restrictions: For Research Use only

Handling

Format: Liquid

Buffer: Purified polyclonal antibody supplied in PBS with 0.09 % (W/V) sodium azide.

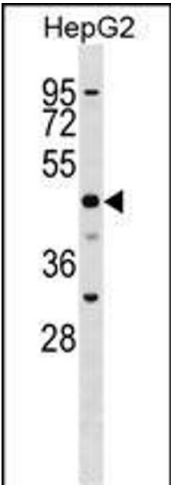
Preservative: Sodium azide

Precaution of Use: This product contains Sodium azide: a POISONOUS AND HAZARDOUS SUBSTANCE which should be handled by trained staff only.

Storage: 4 °C, -20 °C

Storage Comment: SLC2A9 Antibody (N-term) can be refrigerated at 2-8 °C for up to 6 months. For long term storage, keep at -20 °C.

Expiry Date: 6 months



Western Blotting

Image 1. SLC2A9 Antibody (N-term) (ABIN1539587 and ABIN2848545) western blot analysis in HepG2 cell line lysates (35 µg/lane). This demonstrates the SLC2A9 antibody detected the SLC2A9 protein (arrow).