

Datasheet for ABIN1539591  
**anti-ASB10 antibody (N-Term)**[Go to Product page](#)

## 1 Image

## Overview

Quantity:	400 µL
Target:	ASB10
Binding Specificity:	AA 76-103, N-Term
Reactivity:	Human
Host:	Rabbit
Clonality:	Polyclonal
Application:	Western Blotting (WB)

## Product Details

Immunogen:	This ASB10 antibody is generated from rabbits immunized with a KLH conjugated synthetic peptide between 76-103 amino acids from the N-terminal region of human ASB10.
Clone:	RB37821
Isotype:	Ig Fraction
Purification:	This antibody is purified through a protein A column, followed by peptide affinity purification.

## Target Details

Target:	ASB10
Alternative Name:	ASB10 ( <a href="#">ASB10 Products</a> )
Background:	The protein encoded by this gene is a member of the ankyrin repeat and SOCS box-containing (ASB) family of proteins. The SOCS box serves to couple suppressor of cytokine signaling (SOCS) proteins and their binding partners with the elongin B and C complex, possibly targeting

## Target Details

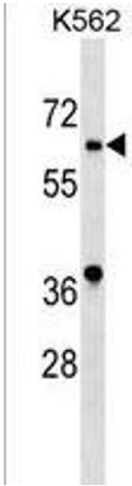
	them for degradation. Multiple alternatively spliced transcript variants have been described for this gene.
Molecular Weight:	50894
Gene ID:	136371
NCBI Accession:	<a href="#">NP_001135931</a> , <a href="#">NP_001135932</a> , <a href="#">NP_543147</a>
UniProt:	<a href="#">Q8WXI3</a>

## Application Details

Application Notes:	WB: 1:1000
Restrictions:	For Research Use only

## Handling

Format:	Liquid
Buffer:	Purified polyclonal antibody supplied in PBS with 0.09 % (W/V) sodium azide.
Preservative:	Sodium azide
Precaution of Use:	This product contains Sodium azide: a POISONOUS AND HAZARDOUS SUBSTANCE which should be handled by trained staff only.
Storage:	4 °C,-20 °C
Storage Comment:	ASB10 Antibody (N-term) can be refrigerated at 2-8 °C for up to 6 months. For long term storage, keep at -20 °C.
Expiry Date:	6 months



Western Blotting

**Image 1.** ASB10 Antibody (N-term) (ABIN1539591 and ABIN2849214) western blot analysis in K562 cell line lysates (35 µg/lane). This demonstrates the ASB10 antibody detected the ASB10 protein (arrow).