

Datasheet for ABIN1539592
anti-KLHL38 antibody (N-Term)[Go to Product page](#)

1 Image

Overview

Quantity:	400 µL
Target:	KLHL38
Binding Specificity:	AA 76-104, N-Term
Reactivity:	Human
Host:	Rabbit
Clonality:	Polyclonal
Application:	Western Blotting (WB)

Product Details

Immunogen:	This KLHL38 antibody is generated from rabbits immunized with a KLH conjugated synthetic peptide between 76-104 amino acids from the N-terminal region of human KLHL38.
Clone:	RB36562
Isotype:	Ig Fraction
Purification:	This antibody is purified through a protein A column, followed by peptide affinity purification.

Target Details

Target:	KLHL38
Alternative Name:	KLHL38 (KLHL38 Products)
Molecular Weight:	65541
Gene ID:	340359

Target Details

NCBI Accession: [NP_001075144](#)

UniProt: [Q2WVGJ6](#)

Application Details

Application Notes: WB: 1:1000

Restrictions: For Research Use only

Handling

Format: Liquid

Buffer: Purified polyclonal antibody supplied in PBS with 0.09 % (W/V) sodium azide.

Preservative: Sodium azide

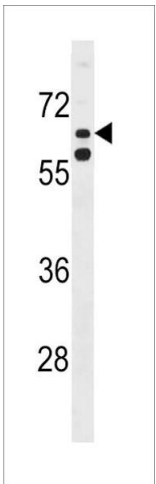
Precaution of Use: This product contains Sodium azide: a POISONOUS AND HAZARDOUS SUBSTANCE which should be handled by trained staff only.

Storage: 4 °C, -20 °C

Storage Comment: KLHL38 Antibody (N-term) can be refrigerated at 2-8 °C for up to 6 months. For long term storage, keep at -20 °C.

Expiry Date: 6 months

Images



Western Blotting

Image 1. KLHL38 Antibody (N-term) (ABIN1539592 and ABIN2848515) western blot analysis in Hela cell line lysates (35 µg/lane). This demonstrates the KLHL38 antibody detected the KLHL38 protein (arrow).