

Datasheet for ABIN1539605
anti-GTF2IRD1 antibody (N-Term)[Go to Product page](#)

1 Image

Overview

Quantity:	400 µL
Target:	GTF2IRD1
Binding Specificity:	AA 79-108, N-Term
Reactivity:	Human
Host:	Rabbit
Clonality:	Polyclonal
Application:	Western Blotting (WB)

Product Details

Immunogen:	This GTF2IRD1 antibody is generated from rabbits immunized with a KLH conjugated synthetic peptide between 79-108 amino acids from the N-terminal region of human GTF2IRD1.
Clone:	RB20973
Isotype:	Ig Fraction
Purification:	This antibody is purified through a protein A column, followed by peptide affinity purification.

Target Details

Target:	GTF2IRD1
Alternative Name:	GTF2IRD1 (GTF2IRD1 Products)
Background:	The protein encoded by this gene contains five GTF2I-like repeats and each repeat possesses a potential helix-loop-helix (HLH) motif. It may have the ability to interact with other HLH-proteins and function as a transcription factor or as a positive transcriptional regulator under the control

Target Details

of Retinoblastoma protein. This gene plays a role in craniofacial and cognitive development and mutations have been associated with Williams-Beuren syndrome, a multisystem developmental disorder caused by deletion of multiple genes at 7q11.23. Alternative splicing results in multiple transcript variants. [provided by RefSeq].

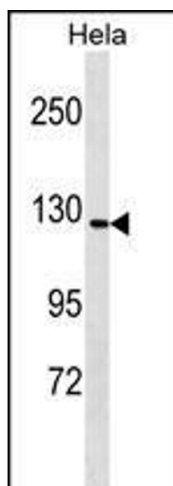
Molecular Weight:	106057
Gene ID:	9569
NCBI Accession:	NP_001186136 , NP_005676 , NP_057412
UniProt:	Q9UHL9

Application Details

Application Notes:	WB: 1:1000
Restrictions:	For Research Use only

Handling

Format:	Liquid
Buffer:	Purified polyclonal antibody supplied in PBS with 0.09 % (W/V) sodium azide.
Preservative:	Sodium azide
Precaution of Use:	This product contains Sodium azide: a POISONOUS AND HAZARDOUS SUBSTANCE which should be handled by trained staff only.
Storage:	4 °C,-20 °C
Storage Comment:	GTF2IRD1 Antibody (N-term) can be refrigerated at 2-8 °C for up to 6 months. For long term storage, keep at -20 °C.
Expiry Date:	6 months



Western Blotting

Image 1. GTF2IRD1 Antibody (N-term) (ABIN1539605 and ABIN2849623) western blot analysis in HeLa cell line lysates (35 µg/lane). This demonstrates the GTF2IRD1 antibody detected the GTF2IRD1 protein (arrow).