

Datasheet for ABIN1539606
anti-CCDC28A antibody (N-Term)[Go to Product page](#)

1 Image

Overview

Quantity:	400 µL
Target:	CCDC28A
Binding Specificity:	AA 79-107, N-Term
Reactivity:	Human
Host:	Rabbit
Clonality:	Polyclonal
Application:	Western Blotting (WB)

Product Details

Immunogen:	This CCDC28A antibody is generated from rabbits immunized with a KLH conjugated synthetic peptide between 79-107 amino acids from the N-terminal region of human CCDC28A.
Clone:	RB26098
Isotype:	Ig Fraction
Purification:	This antibody is purified through a protein A column, followed by peptide affinity purification.

Target Details

Target:	CCDC28A
Alternative Name:	CCDC28A (CCDC28A Products)
Background:	This gene is located in a region close to the locus of the pseudogene of chemokine (C-C motif) receptor-like 1 on chromosome 6. The specific function of this gene has not yet been determined.

Target Details

Molecular Weight:	30367
Gene ID:	25901
NCBI Accession:	NP_056254
UniProt:	Q8IWP9

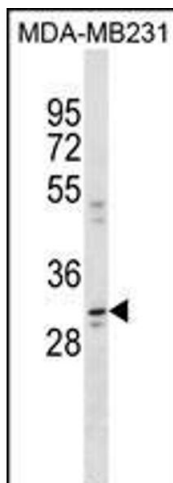
Application Details

Application Notes:	WB: 1:1000
Restrictions:	For Research Use only

Handling

Format:	Liquid
Buffer:	Purified polyclonal antibody supplied in PBS with 0.09 % (W/V) sodium azide.
Preservative:	Sodium azide
Precaution of Use:	This product contains Sodium azide: a POISONOUS AND HAZARDOUS SUBSTANCE which should be handled by trained staff only.
Storage:	4 °C, -20 °C
Storage Comment:	CCDC28A Antibody (N-term) can be refrigerated at 2-8 °C for up to 6 months. For long term storage, keep at -20 °C.
Expiry Date:	6 months

Images



Western Blotting

Image 1. CCDC28A Antibody (N-term) (ABIN1539606 and ABIN2849820) western blot analysis in MDA-M cell line lysates (35 µg/lane). This demonstrates the CCDC28A Antibody detected the CCDC28A protein (arrow).