



[Go to Product page](#)

Datasheet for ABIN1539624
anti-RHOT1 antibody (N-Term)

1 Image

Overview

Quantity:	400 µL
Target:	RHOT1
Binding Specificity:	AA 84-110, N-Term
Reactivity:	Human
Host:	Rabbit
Clonality:	Polyclonal
Application:	Western Blotting (WB)

Product Details

Immunogen:	This RHOT1 antibody is generated from rabbits immunized with a KLH conjugated synthetic peptide between 84-110 amino acids from the N-terminal region of human RHOT1.
Clone:	RB38600
Isotype:	Ig Fraction
Predicted Reactivity:	B, C, Zf, M
Purification:	This antibody is purified through a protein A column, followed by peptide affinity purification.

Target Details

Target:	RHOT1
Alternative Name:	RHOT1 (RHOT1 Products)
Background:	Mitochondrial GTPase involved in mitochondrial trafficking. Probably involved in control of

Target Details

anterograde transport of mitochondria and their subcellular distribution.

Molecular Weight: 70784

Gene ID: 55288

NCBI Accession: [NP_001028738](#), [NP_001028740](#), [NP_060777](#)

UniProt: [Q8IXI2](#)

Application Details

Application Notes: WB: 1:1000

Restrictions: For Research Use only

Handling

Format: Liquid

Buffer: Purified polyclonal antibody supplied in PBS with 0.09 % (W/V) sodium azide.

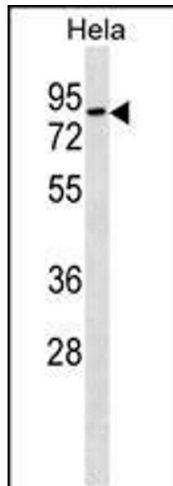
Preservative: Sodium azide

Precaution of Use: This product contains Sodium azide: a POISONOUS AND HAZARDOUS SUBSTANCE which should be handled by trained staff only.

Storage: 4 °C, -20 °C

Storage Comment: RHOT1 Antibody (N-term) can be refrigerated at 2-8 °C for up to 6 months. For long term storage, keep at -20 °C.

Expiry Date: 6 months



Western Blotting

Image 1. RHOT1 Antibody (N-term) (ABIN1539624 and ABIN2850023) western blot analysis in HeLa cell line lysates (35 µg/lane). This demonstrates the RHOT1 antibody detected the RHOT1 protein (arrow).