

Datasheet for ABIN1539628  
**anti-Kelch-Like 4 antibody (N-Term)**[Go to Product page](#)

## 1 Image

## Overview

Quantity:	400 µL
Target:	Kelch-Like 4 (KLHL4)
Binding Specificity:	AA 84-113, N-Term
Reactivity:	Human
Host:	Rabbit
Clonality:	Polyclonal
Application:	Western Blotting (WB)

## Product Details

Immunogen:	This KLHL4 antibody is generated from rabbits immunized with a KLH conjugated synthetic peptide between 84-113 amino acids from the N-terminal region of human KLHL4.
Clone:	RB37334
Isotype:	Ig Fraction
Purification:	This antibody is purified through a protein A column, followed by peptide affinity purification.

## Target Details

Target:	Kelch-Like 4 (KLHL4)
Alternative Name:	KLHL4 ( <a href="#">KLHL4 Products</a> )
Background:	This gene encodes a member of the kelch family of proteins, which are characterized by kelch repeat motifs and a POZ/BTB protein-binding domain. It is thought that kelch repeats are actin binding domains. However, the specific function of this protein has not been determined.

## Target Details

Alternative splicing of this gene results in two transcript variants encoding different isoforms.

Molecular Weight: 80245

Gene ID: 56062

NCBI Accession: [NP\\_061990](#), [NP\\_476503](#)

UniProt: [Q9C0H6](#)

## Application Details

Application Notes: WB: 1:1000

Restrictions: For Research Use only

## Handling

Format: Liquid

Buffer: Purified polyclonal antibody supplied in PBS with 0.09 % (W/V) sodium azide.

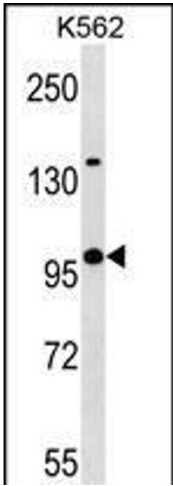
Preservative: Sodium azide

Precaution of Use: This product contains Sodium azide: a POISONOUS AND HAZARDOUS SUBSTANCE which should be handled by trained staff only.

Storage: 4 °C, -20 °C

Storage Comment: KLHL4 Antibody (N-term) can be refrigerated at 2-8 °C for up to 6 months. For long term storage, keep at -20 °C.

Expiry Date: 6 months



Western Blotting

**Image 1.** KLHL4 Antibody (N-term) (ABIN1539628 and ABIN2850174) western blot analysis in K562 cell line lysates (35 µg/lane). This demonstrates the KLHL4 antibody detected the KLHL4 protein (arrow).