

Datasheet for ABIN1539634
anti-SMAP1 antibody (N-Term)[Go to Product page](#)

1 Image

Overview

Quantity:	400 µL
Target:	SMAP1
Binding Specificity:	AA 87-113, N-Term
Reactivity:	Human
Host:	Rabbit
Clonality:	Polyclonal
Application:	Western Blotting (WB)

Product Details

Immunogen:	This SMAP1 antibody is generated from rabbits immunized with a KLH conjugated synthetic peptide between 87-113 amino acids from the N-terminal region of human SMAP1.
Clone:	RB39875
Isotype:	Ig Fraction
Predicted Reactivity:	M, C
Purification:	This antibody is purified through a protein A column, followed by peptide affinity purification.

Target Details

Target:	SMAP1
Alternative Name:	SMAP1 (SMAP1 Products)
Background:	The protein encoded by this gene is similar to the mouse stromal membrane-associated

Target Details

protein-1. This similarity suggests that this human gene product is also a type II membrane glycoprotein involved in the erythropoietic stimulatory activity of stromal cells. Alternate splicing results in multiple transcript variants encoding different isoforms.

Molecular Weight: 50386

Gene ID: 60682

NCBI Accession: [NP_001037770](#), [NP_001268368](#), [NP_001268369](#), [NP_068759](#)

UniProt: [Q8IYB5](#)

Application Details

Application Notes: WB: 1:1000

Restrictions: For Research Use only

Handling

Format: Liquid

Buffer: Purified polyclonal antibody supplied in PBS with 0.09 % (W/V) sodium azide.

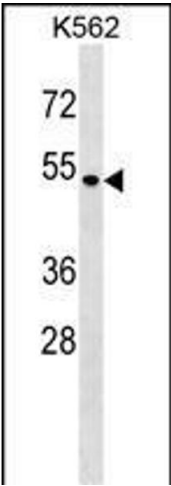
Preservative: Sodium azide

Precaution of Use: This product contains Sodium azide: a POISONOUS AND HAZARDOUS SUBSTANCE which should be handled by trained staff only.

Storage: 4 °C, -20 °C

Storage Comment: SMAP1 Antibody (N-term) can be refrigerated at 2-8 °C for up to 6 months. For long term storage, keep at -20 °C.

Expiry Date: 6 months



Western Blotting

Image 1. SP1 Antibody (N-term) (ABIN1539634 and ABIN2850293) western blot analysis in K562 cell line lysates (35 µg/lane). This demonstrates the SP1 antibody detected the SP1 protein (arrow).