

Datasheet for ABIN1539635  
**anti-NOVA2 antibody (N-Term)**[Go to Product page](#)

## 1 Image

## Overview

Quantity:	400 µL
Target:	NOVA2
Binding Specificity:	AA 87-114, N-Term
Reactivity:	Human
Host:	Rabbit
Clonality:	Polyclonal
Application:	Western Blotting (WB)

## Product Details

Immunogen:	This NOVA2 antibody is generated from rabbits immunized with a KLH conjugated synthetic peptide between 87-114 amino acids from the N-terminal region of human NOVA2.
Clone:	RB37500
Isotype:	Ig Fraction
Purification:	This antibody is purified through a protein A column, followed by peptide affinity purification.

## Target Details

Target:	NOVA2
Alternative Name:	NOVA2 ( <a href="#">NOVA2 Products</a> )
Background:	NOVA2 may regulate RNA splicing or metabolism in a specific subset of developing neurons (By similarity). Binds single strand RNA.

## Target Details

Molecular Weight:	49009
Gene ID:	4858
NCBI Accession:	<a href="#">NP_002507</a>
UniProt:	<a href="#">Q9UNW9</a>

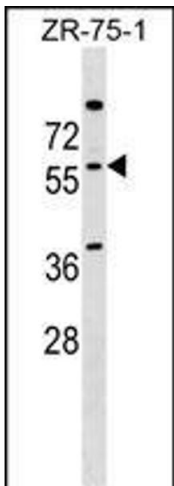
## Application Details

Application Notes:	WB: 1:1000
Restrictions:	For Research Use only

## Handling

Format:	Liquid
Buffer:	Purified polyclonal antibody supplied in PBS with 0.09 % (W/V) sodium azide.
Preservative:	Sodium azide
Precaution of Use:	This product contains Sodium azide: a POISONOUS AND HAZARDOUS SUBSTANCE which should be handled by trained staff only.
Storage:	4 °C, -20 °C
Storage Comment:	NOVA2 Antibody (N-term) can be refrigerated at 2-8 °C for up to 6 months. For long term storage, keep at -20 °C.
Expiry Date:	6 months

## Images



### Western Blotting

**Image 1.** NOVA2 Antibody (N-term) (ABIN1539635 and ABIN2849556) western blot analysis in ZR-75-1 cell line lysates (35 µg/lane). This demonstrates the NOVA2 antibody detected the NOVA2 protein (arrow).