

Datasheet for ABIN1539649
anti-ARHGEF18 antibody (N-Term)[Go to Product page](#)

1 Image

Overview

Quantity:	400 µL
Target:	ARHGEF18
Binding Specificity:	AA 91-119, N-Term
Reactivity:	Human
Host:	Rabbit
Clonality:	Polyclonal
Application:	Western Blotting (WB)

Product Details

Immunogen:	This ARHGEF18 antibody is generated from rabbits immunized with a KLH conjugated synthetic peptide between 91-119 amino acids from the N-terminal region of human ARHGEF18.
Clone:	RB32281
Isotype:	Ig Fraction
Purification:	This antibody is purified through a protein A column, followed by peptide affinity purification.

Target Details

Target:	ARHGEF18
Alternative Name:	ARHGEF18 (ARHGEF18 Products)
Background:	Rho GTPases are GTP binding proteins that regulate a wide spectrum of cellular functions. These cellular processes include cytoskeletal rearrangements, gene transcription, cell growth

Target Details

and motility. Activation of Rho GTPases is under the direct control of guanine nucleotide exchange factors (GEFs). The protein encoded by this gene is a guanine nucleotide exchange factor and belongs to the Rho GTPase GFE family. Family members share a common feature, a Dbl (DH) homology domain followed by a pleckstrin (PH) homology domain. Alternatively spliced transcript variants encoding different isoforms have been identified.

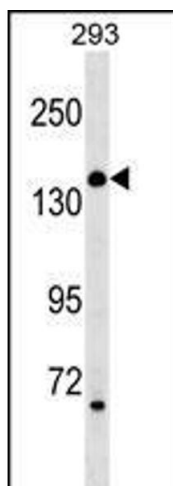
Molecular Weight:	151642
Gene ID:	23370
NCBI Accession:	NP_001124427 , NP_056133
UniProt:	Q6ZSZ5
Pathways:	Neurotrophin Signaling Pathway

Application Details

Application Notes:	WB: 1:1000
Restrictions:	For Research Use only

Handling

Format:	Liquid
Buffer:	Purified polyclonal antibody supplied in PBS with 0.09 % (W/V) sodium azide.
Preservative:	Sodium azide
Precaution of Use:	This product contains Sodium azide: a POISONOUS AND HAZARDOUS SUBSTANCE which should be handled by trained staff only.
Storage:	4 °C, -20 °C
Storage Comment:	ARHGEF18 Antibody (N-term) can be refrigerated at 2-8 °C for up to 6 months. For long term storage, keep at -20 °C.
Expiry Date:	6 months



Western Blotting

Image 1. ARHGEF18 Antibody (N-term) (ABIN1539649 and ABIN2849423) western blot analysis in 293 cell line lysates (35 µg/lane). This demonstrates the ARHGEF18 antibody detected the ARHGEF18 protein (arrow).