



Datasheet for ABIN1539654 **anti-KIF3B antibody (N-Term)**



[Go to Product page](#)

1 Image

Overview

Quantity:	400 µL
Target:	KIF3B
Binding Specificity:	AA 92-120, N-Term
Reactivity:	Human
Host:	Rabbit
Clonality:	Polyclonal
Application:	Western Blotting (WB)

Product Details

Immunogen:	This KIF3B antibody is generated from rabbits immunized with a KLH conjugated synthetic peptide between 92-120 amino acids from the N-terminal region of human KIF3B.
Clone:	RB37039
Isotype:	Ig Fraction
Purification:	This antibody is purified through a protein A column, followed by peptide affinity purification.

Target Details

Target:	KIF3B
Alternative Name:	KIF3B (KIF3B Products)
Background:	The protein encoded by this gene acts as a heterodimer with kinesin family member 3A to aid in chromosome movement during mitosis and meiosis. The encoded protein is a plus end-directed microtubule motor and can interact with the SMC3 subunit of the cohesin complex. In

Target Details

In addition, the encoded protein may be involved in the intracellular movement of membranous organelles. This protein and kinesin family member 3A form the kinesin II subfamily of the kinesin superfamily.

Molecular Weight: 85125

Gene ID: 9371

NCBI Accession: [NP_004789](#)

UniProt: [O15066](#)

Pathways: [Hedgehog Signaling, M Phase](#)

Application Details

Application Notes: WB: 1:1000

Restrictions: For Research Use only

Handling

Format: Liquid

Buffer: Purified polyclonal antibody supplied in PBS with 0.09 % (W/V) sodium azide.

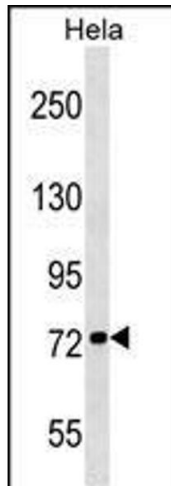
Preservative: Sodium azide

Precaution of Use: This product contains Sodium azide: a POISONOUS AND HAZARDOUS SUBSTANCE which should be handled by trained staff only.

Storage: 4 °C, -20 °C

Storage Comment: KIF3B Antibody (N-term) can be refrigerated at 2-8 °C for up to 6 months. For long term storage, keep at -20 °C.

Expiry Date: 6 months



Western Blotting

Image 1. KIF3B Antibody (N-term) (ABIN1539654 and ABIN2848882) western blot analysis in HeLa cell line lysates (35 µg/lane). This demonstrates the KIF3B antibody detected the KIF3B protein (arrow).