



[Go to Product page](#)

Datasheet for ABIN1539664
anti-xpr1 antibody (N-Term)

1 Image

Overview

Quantity:	400 µL
Target:	xpr1
Binding Specificity:	AA 96-122, N-Term
Reactivity:	Human
Host:	Rabbit
Clonality:	Polyclonal
Application:	Western Blotting (WB)

Product Details

Immunogen:	This XPR1 antibody is generated from rabbits immunized with a KLH conjugated synthetic peptide between 96-122 amino acids from the N-terminal region of human XPR1.
Clone:	RB38380
Isotype:	Ig Fraction
Predicted Reactivity:	Ha, M
Purification:	This antibody is purified through a protein A column, followed by peptide affinity purification.

Target Details

Target:	xpr1
Alternative Name:	XPR1 (xpr1 Products)
Background:	XPR1 may function in G-protein coupled signal transduction (By similarity). Potential receptor

Target Details

for xenotropic and polytropic murine leukemia retroviruses.

Molecular Weight: 81535

Gene ID: 9213

NCBI Accession: [NP_001129141](#), [NP_004727](#)

UniProt: [Q9UBH6](#)

Application Details

Application Notes: WB: 1:1000

Restrictions: For Research Use only

Handling

Format: Liquid

Buffer: Purified polyclonal antibody supplied in PBS with 0.09 % (W/V) sodium azide.

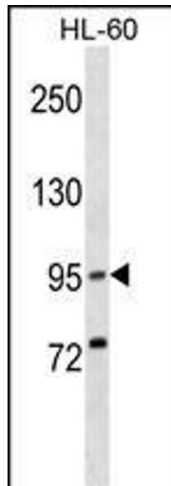
Preservative: Sodium azide

Precaution of Use: This product contains Sodium azide: a POISONOUS AND HAZARDOUS SUBSTANCE which should be handled by trained staff only.

Storage: 4 °C, -20 °C

Storage Comment: XPR1 Antibody (N-term) can be refrigerated at 2-8 °C for up to 6 months. For long term storage, keep at -20 °C.

Expiry Date: 6 months



Western Blotting

Image 1. XPR1 Antibody (N-term) (ABIN1539664 and ABIN2849875) western blot analysis in HL-60 cell line lysates (35 µg/lane). This demonstrates the XPR1 Antibody detected the XPR1 protein (arrow).