

Datasheet for ABIN1539670
anti-RGL4 antibody (N-Term)[Go to Product page](#)

1 Image

Overview

Quantity:	400 µL
Target:	RGL4
Binding Specificity:	AA 98-125, N-Term
Reactivity:	Human
Host:	Rabbit
Clonality:	Polyclonal
Application:	Western Blotting (WB)

Product Details

Immunogen:	This RGL4 antibody is generated from rabbits immunized with a KLH conjugated synthetic peptide between 98-125 amino acids from the N-terminal region of human RGL4.
Clone:	RB37616
Isotype:	Ig Fraction
Purification:	This antibody is purified through a protein A column, followed by peptide affinity purification.

Target Details

Target:	RGL4
Alternative Name:	RGL4 (RGL4 Products)
Background:	Ral GDS (Ral guanine nucleotide dissociation stimulator) is a guanine nucleotide exchange factor (GEF) that activates Ral and is implicated in oncogenic Ras-induced cell transformation. RGL4 (ral guanine nucleotide dissociation stimulator-like 4), also known as Rgr, is a 473 amino

Target Details

acid protein that localizes to the cytoplasmic vesicle of cells. Belonging to the GEF family of proteins, RGL4 induces phosphorylation of ERKs, p38 and JNK kinases, and it increases the levels of GTP bound forms of Ral and Ras. Ras activation is crucial for the transforming activity of RGL4. Due to its similarity to Ral GDS, RGL4 may be implicated in carcinogenesis.

Molecular Weight: 52346

Gene ID: 266747

NCBI Accession: [NP_705843](#)

UniProt: [Q8IZJ4](#)

Application Details

Application Notes: WB: 1:1000

Restrictions: For Research Use only

Handling

Format: Liquid

Buffer: Purified polyclonal antibody supplied in PBS with 0.09 % (W/V) sodium azide.

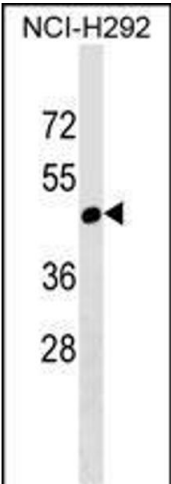
Preservative: Sodium azide

Precaution of Use: This product contains Sodium azide: a POISONOUS AND HAZARDOUS SUBSTANCE which should be handled by trained staff only.

Storage: 4 °C, -20 °C

Storage Comment: RGL4 Antibody (N-term) can be refrigerated at 2-8 °C for up to 6 months. For long term storage, keep at -20 °C.

Expiry Date: 6 months



Western Blotting

Image 1. RGL4 Antibody (N-term) (ABIN1539670 and ABIN2849187) western blot analysis in NCI- cell line lysates (35 µg/lane). This demonstrates the RGL4 antibody detected the RGL4 protein (arrow).