

Datasheet for ABIN1539757  
**anti-Angiomotin antibody (pSer1041)**[Go to Product page](#)

## 1 Image

## Overview

Quantity:	400 µL
Target:	Angiomotin (AMOT)
Binding Specificity:	pSer1041
Reactivity:	Human
Host:	Rabbit
Clonality:	Polyclonal
Application:	Dot Blot (DB)

## Product Details

Immunogen:	This AMOT Antibody is generated from rabbits immunized with a KLH conjugated synthetic phosphopeptide corresponding to amino acid residues surrounding S1041 of human AMOT.
Clone:	RB40428
Isotype:	Ig Fraction
Purification:	This antibody is purified through a protein A column, followed by peptide affinity purification.

## Target Details

Target:	Angiomotin (AMOT)
Alternative Name:	AMOT ( <a href="#">AMOT Products</a> )
Background:	This gene belongs to the motin family of angiostatin binding proteins characterized by conserved coiled-coil domains and C-terminal PDZ binding motifs. The encoded protein is expressed predominantly in endothelial cells of capillaries as well as larger vessels of the

## Target Details

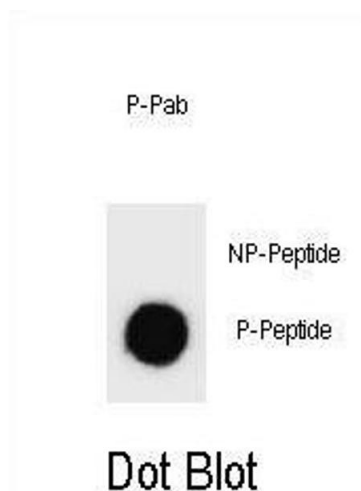
	placenta where it may mediate the inhibitory effect of angiostatin on tube formation and the migration of endothelial cells toward growth factors during the formation of new blood vessels. Alternative splicing results in multiple transcript variants encoding different isoforms.
Molecular Weight:	118085
Gene ID:	154796
NCBI Accession:	<a href="#">NP_001106962</a> , <a href="#">NP_573572</a>
UniProt:	<a href="#">Q4VCS5</a>
Pathways:	<a href="#">Cell-Cell Junction Organization</a> , <a href="#">Regulation of Cell Size</a>

## Application Details

Application Notes:	DB: 1:500
Restrictions:	For Research Use only

## Handling

Format:	Liquid
Buffer:	Purified polyclonal antibody supplied in PBS with 0.09 % (W/V) sodium azide.
Preservative:	Sodium azide
Precaution of Use:	This product contains Sodium azide: a POISONOUS AND HAZARDOUS SUBSTANCE which should be handled by trained staff only.
Storage:	4 °C,-20 °C
Storage Comment:	Phospho-AMOT-S1041 Antibody can be refrigerated at 2-8 °C for up to 6 months. For long term storage, keep at -20 °C.
Expiry Date:	6 months



#### Dot Blot

**Image 1.** Dot blot analysis of Phospho-OT- Antibody Phospho-specific Pab (ABIN1539757 and ABIN2839842) on nitrocellulose membrane. 50 ng of Phospho-peptide or Non Phospho-peptide per dot were adsorbed. Antibody working concentrations are 0.6 µg per ml.