

Datasheet for ABIN1539788
anti-PTEN antibody (pTyr240)



[Go to Product page](#)

1 Image

Overview

Quantity:	400 µL
Target:	PTEN
Binding Specificity:	pTyr240
Reactivity:	Human
Host:	Rabbit
Clonality:	Polyclonal
Conjugate:	This PTEN antibody is un-conjugated
Application:	Dot Blot (DB)

Product Details

Immunogen:	This PTEN Antibody is generated from rabbits immunized with a KLH conjugated synthetic phosphopeptide corresponding to amino acid residues surrounding Y240 of human PTEN.
Clone:	RB39437
Isotype:	Ig Fraction
Predicted Reactivity:	M
Purification:	This antibody is purified through a protein A column, followed by peptide affinity purification.

Target Details

Target:	PTEN
Alternative Name:	PTEN (PTEN Products)

Target Details

Background: This gene was identified as a tumor suppressor that is mutated in a large number of cancers at high frequency. The protein encoded this gene is a phosphatidylinositol-3,4,5-trisphosphate 3-phosphatase. It contains a tensin like domain as well as a catalytic domain similar to that of the dual specificity protein tyrosine phosphatases. Unlike most of the protein tyrosine phosphatases, this protein preferentially dephosphorylates phosphoinositide substrates. It negatively regulates intracellular levels of phosphatidylinositol-3,4,5-trisphosphate in cells and functions as a tumor suppressor by negatively regulating AKT/PKB signaling pathway.

Molecular Weight: 47166

Gene ID: 5728

NCBI Accession: [NP_000305](#)

UniProt: [P60484](#)

Pathways: [TCR Signaling](#), [Fc-epsilon Receptor Signaling Pathway](#), [EGFR Signaling Pathway](#), [Inositol Metabolic Process](#), [Synaptic Membrane](#), [Regulation of Cell Size](#), [Autophagy](#), [Platelet-derived growth Factor Receptor Signaling](#), [Signaling of Hepatocyte Growth Factor Receptor](#), [BCR Signaling](#)

Application Details

Application Notes: DB: 1:500

Restrictions: For Research Use only

Handling

Format: Liquid

Buffer: Purified polyclonal antibody supplied in PBS with 0.09 % (W/V) sodium azide.

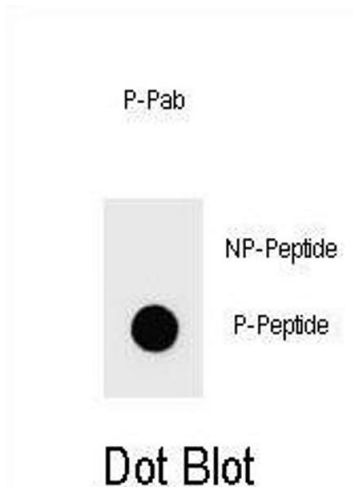
Preservative: Sodium azide

Precaution of Use: This product contains Sodium azide: a POISONOUS AND HAZARDOUS SUBSTANCE which should be handled by trained staff only.

Storage: 4 °C,-20 °C

Storage Comment: Phospho-PTEN-Y240 Antibody can be refrigerated at 2-8 °C for up to 6 months. For long term storage, keep at -20 °C.

Expiry Date: 6 months



Dot Blot

Image 1. Dot blot analysis of Phospho-PTEN- Antibody Phospho-specific Pab i on nitrocellulose membrane. 50 ng of Phospho-peptide or Non Phospho-peptide per dot were adsorbed. Antibody working concentrations are 0.6 μ g per ml.