

Datasheet for ABIN1539834
anti-Lambda-IgLC antibody



[Go to Product page](#)

2 Images

Overview

Quantity:	400 µL
Target:	Lambda-IgLC
Reactivity:	Human
Host:	Mouse
Clonality:	Monoclonal
Application:	Western Blotting (WB), Immunohistochemistry (Paraffin-embedded Sections) (IHC (p))

Product Details

Immunogen:	This Lambda light chain monoclonal antibody is generated from mouse immunized with Lambda light chain recombinant protein.
Clone:	HP6054
Isotype:	IgG2a kappa
Purification:	This antibody is purified through a protein G column, followed by dialysis against PBS.

Target Details

Target:	Lambda-IgLC
Alternative Name:	Lambda light chain (Lambda-IgLC Products)
Background:	Immunoglobulins recognize foreign antigens and initiate immune responses such as phagocytosis and the complement system. Each immunoglobulin molecule consists of two identical heavy chains and two identical light chains. There are two types of light chains designated as kappa and lambda (1). Light chain types are based on differences in the amino

Target Details

acid sequence in the constant region of the light chain. If a cell is unsuccessful in rearranging both of its kappa light chain genes, it then attempts to make a lambda light chain. If a cell successfully rearranges a lambda light chain gene, it will be a B cell that makes an immunoglobulin with a lambda light chain (2).

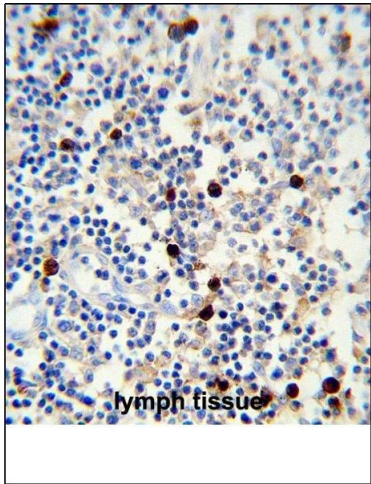
Molecular Weight:	12249
UniProt:	P01701

Application Details

Application Notes:	WB: 1:500~16000. IHC-P: 1:10~50
Restrictions:	For Research Use only

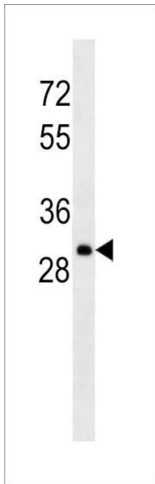
Handling

Format:	Liquid
Buffer:	Purified monoclonal antibody supplied in PBS with 0.09 % (W/V) sodium azide.
Preservative:	Sodium azide
Precaution of Use:	This product contains Sodium azide: a POISONOUS AND HAZARDOUS SUBSTANCE which should be handled by trained staff only.
Storage:	4 °C,-20 °C
Storage Comment:	Lambda light chain Antibody can be refrigerated at 2-8 °C for up to 6 months. For long term storage store at -20 °C in small aliquots to prevent freeze-thaw cycles.
Expiry Date:	6 months



Immunohistochemistry (Paraffin-embedded Sections)

Image 1. Lambda light chain Antibody (ABIN1539834 and ABIN2843347) immunohistochemistry analysis in formalin fixed and paraffin embedded human lymph tissue followed by peroxidase conjugation of the secondary antibody and DAB staining. This data demonstrates the use of Lambda light chain Antibody for immunohistochemistry. Clinical relevance has not been evaluated.



Western Blotting

Image 2. Lambda light chain Antibody western blot analysis in Ramos cell line lysates (35 µg/lane). This demonstrates the Lambda light chain antibody detected the Lambda light chain protein (arrow).