

Datasheet for ABIN1539843
anti-LGR5 antibody (AA 689-719)

2 Images

[Go to Product page](#)

Overview

Quantity:	400 µL
Target:	LGR5
Binding Specificity:	AA 689-719
Reactivity:	Human
Host:	Mouse
Clonality:	Monoclonal
Application:	Western Blotting (WB), Flow Cytometry (FACS)

Product Details

Immunogen:	This LGR5/GPR49 antibody is generated from mice immunized with a KLH conjugated synthetic peptide between 689-719 amino acids from human LGR5/GPR49.
Clone:	349CT16-1-3-1
Isotype:	IgG1
Purification:	This antibody is purified through a protein G column, followed by dialysis against PBS.

Target Details

Target:	LGR5
Alternative Name:	LGR5/GPR49 (LGR5 Products)
Background:	Orphan receptor. Stem cell marker of the intestinal epithelium and the hair follicle. Target gene of Wnt signaling.

Target Details

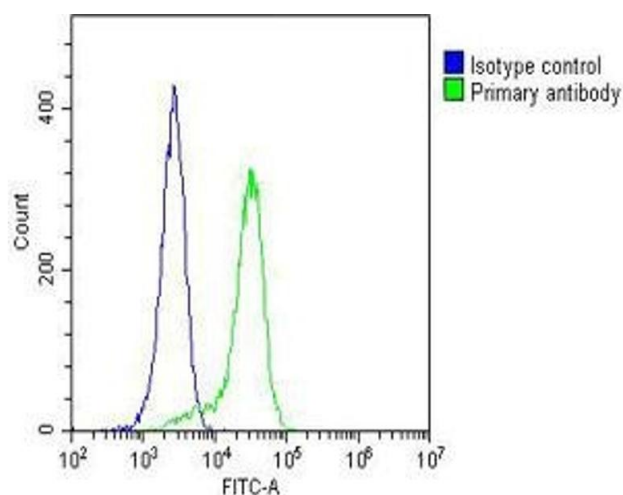
Molecular Weight:	99998
Gene ID:	8549
NCBI Accession:	NP_001264155 , NP_003658
UniProt:	O75473
Pathways:	WNT Signaling

Application Details

Application Notes:	WB: 1:2000. FC: 1:25
Restrictions:	For Research Use only

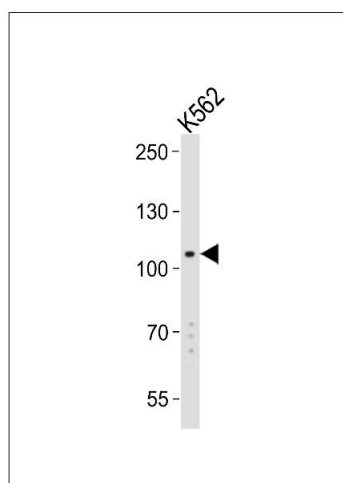
Handling

Format:	Liquid
Buffer:	Purified monoclonal antibody supplied in PBS with 0.09 % (W/V) sodium azide.
Preservative:	Sodium azide
Precaution of Use:	This product contains Sodium azide: a POISONOUS AND HAZARDOUS SUBSTANCE which should be handled by trained staff only.
Storage:	4 °C, -20 °C
Storage Comment:	LGR5/GPR49 Antibody can be refrigerated at 2-8 °C for up to 6 months. For long term storage, keep at -20 °C.
Expiry Date:	6 months



Flow Cytometry

Image 1. Overlay histogram showing HeLa cells stained with (ABIN1539843 and ABIN2843824)(green line). The cells were fixed with 2 % paraformaldehyde (10 min) and then permeabilized with 90 % methanol for 10 min. The cells were then incubated in 2 % bovine serum albumin to block non-specific protein-protein interactions followed by the antibody ((ABIN1539843 and ABIN2843824), 1:25 dilution) for 60 min at 37 °C. The secondary antibody used was Goat-Anti-Mouse IgG, DyLight® 488 Conjugated Highly Cross-Adsorbed(OJ192088) at 1/200 dilution for 40 min at 37 °C. Isotype control antibody (blue line) was mouse IgG1 (1 μ g/ 1×10^6 cells) used under the same conditions. Acquisition of >10,000 events was performed.



Western Blotting

Image 2. Western blot analysis of lysates from K562 cell line (from left to right), using LGR5/GPR49 Antibody (Center) (ABIN1539843 and ABIN2843824). (ABIN1539843 and ABIN2843824) was diluted at 1:2000 at each lane. A goat anti-mouse IgG H&L(HRP) at 1:3000 dilution was used as the secondary antibody. Lysates at 20 μ g per lane.