

Datasheet for ABIN1539857
anti-RPS6KA3 antibody[Go to Product page](#)

2 Images

Overview

Quantity:	0.1 mL
Target:	RPS6KA3
Reactivity:	Human, Mouse
Host:	Mouse
Clonality:	Monoclonal
Conjugate:	This RPS6KA3 antibody is un-conjugated
Application:	Western Blotting (WB)

Product Details

Immunogen:	Purified His-tagged RPS6KA3 protein(Fragment) was used to produced this monoclonal antibody.
Clone:	356CT10-6-1-2
Isotype:	IgG1
Purification:	Mouse monoclonal antibody supplied in crude ascites with 0.09% (W/V) sodium azide.

Target Details

Target:	RPS6KA3
Alternative Name:	RPS6KA3 (RPS6KA3 Products)
Background:	This gene encodes a member of the RSK (ribosomal S6 kinase) family of serine/threonine kinases. This kinase contains 2 non-identical kinase catalytic domains and phosphorylates various substrates, including members of the mitogen-activated kinase (MAPK) signalling

Target Details

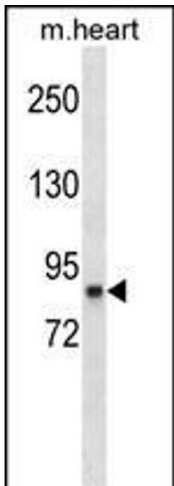
	pathway. The activity of this protein has been implicated in controlling cell growth and differentiation. Mutations in this gene have been associated with Coffin-Lowry syndrome (CLS).
Molecular Weight:	83736
Gene ID:	6197
NCBI Accession:	NP_004577
UniProt:	P51812
Pathways:	MAPK Signaling , Neurotrophin Signaling Pathway , Activation of Innate immune Response , Toll-Like Receptors Cascades

Application Details

Application Notes:	WB: 1:500~16000. WB: 1:500~16000
Restrictions:	For Research Use only

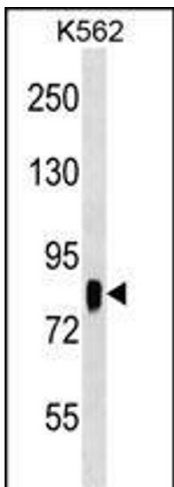
Handling

Format:	Liquid
Buffer:	Mouse monoclonal antibody supplied in crude ascites with 0.09 % (W/V) sodium azide.
Preservative:	Sodium azide
Precaution of Use:	This product contains Sodium azide: a POISONOUS AND HAZARDOUS SUBSTANCE which should be handled by trained staff only.
Storage:	4 °C,-20 °C
Storage Comment:	RPS6KA3 Antibody(Ascites) can be refrigerated at 2-8 °C for up to 6 months. For long term storage, keep at -20 °C.
Expiry Date:	6 months



Western Blotting

Image 1. RPS6KA3 Antibody ABIN1539857 western blot analysis in mouse heart tissue lysates (35 µg/lane). This demonstrates the RPS6KA3 antibody detected the RPS6KA3 protein (arrow).



Western Blotting

Image 2. RPS6KA3 Antibody ABIN1539857 western blot analysis in K562 cell line lysates (35 µg/lane). This demonstrates the RPS6KA3 antibody detected the RPS6KA3 protein (arrow).