



Datasheet for ABIN1539885
anti-SPRED1 antibody



[Go to Product page](#)

1 Image

Overview

Quantity:	400 µL
Target:	SPRED1
Reactivity:	Human, Mouse
Host:	Mouse
Clonality:	Monoclonal
Application:	Western Blotting (WB)

Product Details

Immunogen:	Purified His-tagged SPRED1 protein(Fragment) was used to produced this monoclonal antibody.
Clone:	462CT2-5-1
Isotype:	IgG1
Purification:	This antibody is purified through a protein G column, followed by dialysis against PBS.

Target Details

Target:	SPRED1
Alternative Name:	SPRED1 (SPRED1 Products)
Background:	The protein encoded by this gene is a member of the Sprouty family of proteins and is phosphorylated by tyrosine kinase in response to several growth factors. The encoded protein can act as a homodimer or as a heterodimer with SPRED2 to regulate activation of the MAP kinase cascade. Defects in this gene are a cause of neurofibromatosis type 1-like syndrome

Target Details

(NFLS). [provided by RefSeq].

Molecular Weight: 50477

Gene ID: 161742

NCBI Accession: [NP_689807](#)

UniProt: [Q7Z699](#)

Pathways: [Positive Regulation of Response to DNA Damage Stimulus](#)

Application Details

Application Notes: WB: 1:100~250

Restrictions: For Research Use only

Handling

Format: Liquid

Buffer: Purified monoclonal antibody supplied in PBS with 0.09 % (W/V) sodium azide.

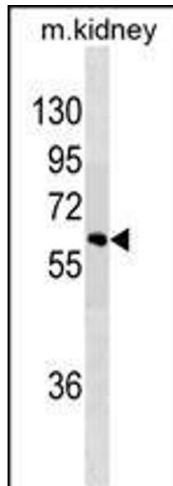
Preservative: Sodium azide

Precaution of Use: This product contains Sodium azide: a POISONOUS AND HAZARDOUS SUBSTANCE which should be handled by trained staff only.

Storage: 4 °C,-20 °C

Storage Comment: SPRED1 Antibody can be refrigerated at 2-8 °C for up to 6 months. For long term storage, keep at -20 °C.

Expiry Date: 6 months



Western Blotting

Image 1. SPRED1 Antibody (ABIN1539885 and ABIN2843848) western blot analysis in mouse kidney tissue lysates (35 µg/lane). This demonstrates the SPRED1 antibody detected the SPRED1 protein (arrow).