

Datasheet for ABIN1539887

anti-PSMA5 antibody

4 Images

[Go to Product page](#)

Overview

Quantity:	400 µL
Target:	PSMA5
Reactivity:	Human, Mouse, Rat
Host:	Mouse
Clonality:	Monoclonal
Application:	Western Blotting (WB), Immunofluorescence (IF), Immunohistochemistry (Paraffin-embedded Sections) (IHC (p))

Product Details

Immunogen:	Purified His-tagged PSMA5 protein(Fragment) was used to produced this monoclonal antibody.
Clone:	426CT8-5-1
Isotype:	IgG1
Predicted Reactivity:	B
Purification:	This antibody is purified through a protein G column, followed by dialysis against PBS.

Target Details

Target:	PSMA5
Alternative Name:	PSMA5 (PSMA5 Products)
Background:	The proteasome is a multicatalytic proteinase complex with a highly ordered ring-shaped 20S core structure. The core structure is composed of 4 rings of 28 non-identical subunits, 2 rings are composed of 7 alpha subunits and 2 rings are composed of 7 beta subunits. Proteasomes

Target Details

are distributed throughout eukaryotic cells at a high concentration and cleave peptides in an ATP/ubiquitin-dependent process in a non-lysosomal pathway. An essential function of a modified proteasome, the immunoproteasome, is the processing of class I MHC peptides. This gene encodes a member of the peptidase T1A family, that is a 20S core alpha subunit.

Molecular Weight: 26411

Gene ID: 5686

NCBI Accession: [NP_001186701](#), [NP_001186702](#), [NP_001186703](#), [NP_002781](#)

UniProt: [P28066](#)

Pathways: [Mitotic G1-G1/S Phases](#), [DNA Replication](#), [Synthesis of DNA](#)

Application Details

Application Notes: IF: 1:25. WB: 1:100~500. WB: 1:1000. IHC-P: 1:25

Restrictions: For Research Use only

Handling

Format: Liquid

Buffer: Purified monoclonal antibody supplied in PBS with 0.09 % (W/V) sodium azide.

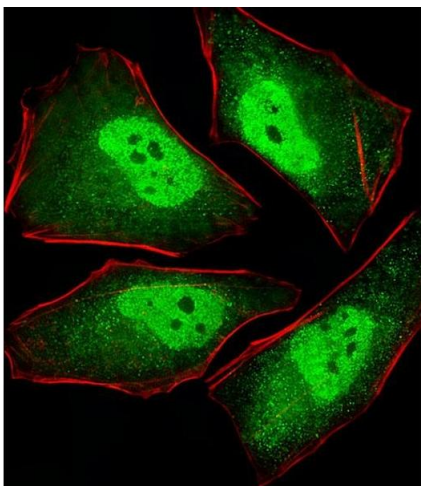
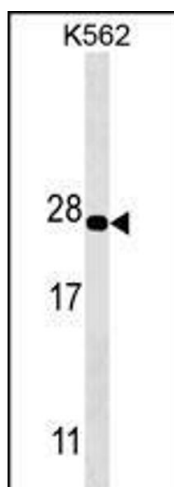
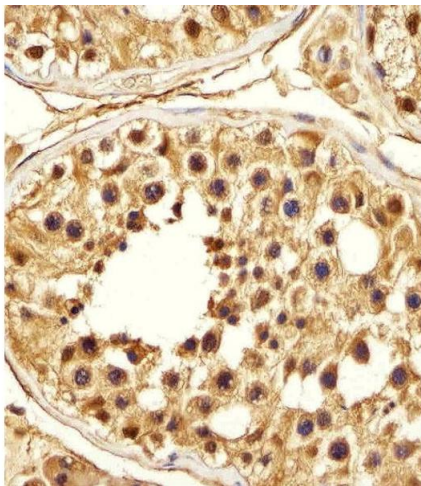
Preservative: Sodium azide

Precaution of Use: This product contains Sodium azide: a POISONOUS AND HAZARDOUS SUBSTANCE which should be handled by trained staff only.

Storage: 4 °C,-20 °C

Storage Comment: PSMA5 Antibody can be refrigerated at 2-8 °C for up to 6 months. For long term storage, keep at -20 °C.

Expiry Date: 6 months



Immunohistochemistry (Paraffin-embedded Sections)

Image 1. Immunohistochemical analysis of paraffin-embedded H. testis section using PS Antibody (ABIN1539887 and ABIN2843849). (ABIN1539887 and ABIN2843849) was diluted at 1:25 dilution. A peroxidase-conjugated goat anti-mouse IgG at 1:400 dilution was used as the secondary antibody, followed by DAB staining.

Western Blotting

Image 2. PS Antibody (ABIN1539887 and ABIN2843849) western blot analysis in K562 cell line lysates (35 µg/lane). This demonstrates the PS antibody detected the PS protein (arrow).

Immunofluorescence

Image 3. Fluorescent image of HeLa cells stained with XAF1 PS Antibody (ABIN1539887 and ABIN2843849). (ABIN1539887 and ABIN2843849) was diluted at 1:25 dilution. An Alexa Fluor® 488-conjugated goat anti-mouse IgG at 1:400 dilution was used as the secondary antibody (green). Cytoplasmic actin was counterstained with Alexa Fluor® 555 conjugated with Phalloidin (red).

Please check the [product details page](#) for more images. Overall 4 images are available for ABIN1539887.