

Datasheet for ABIN1539904
anti-SERPINC1 antibody (AA 50-79)



[Go to Product page](#)

1 Image

Overview

Quantity:	0.1 mL
Target:	SERPINC1
Binding Specificity:	AA 50-79
Reactivity:	Human, Rat
Host:	Mouse
Clonality:	Monoclonal
Conjugate:	This SERPINC1 antibody is un-conjugated
Application:	Western Blotting (WB)

Product Details

Immunogen:	This SERPINC1 antibody is generated from mice immunized with a KLH conjugated synthetic peptide between 50-79 amino acids from human SERPINC1.
Clone:	435CT4-7-4
Isotype:	IgG1
Purification:	Mouse monoclonal antibody supplied in crude ascites with 0.09% (W/V) sodium azide.

Target Details

Target:	SERPINC1
Alternative Name:	SERPINC1 (SERPINC1 Products)
Background:	The protein encoded by this gene is a plasma protease inhibitor and a member of the serpin

Target Details

superfamily. This protein inhibits thrombin as well as other activated serine proteases of the coagulation system, and it regulates the blood coagulation cascade. The protein includes two functional domains: the heparin binding-domain at the N-terminus of the mature protein, and the reactive site domain at the C-terminus. The inhibitory activity is enhanced by the presence of heparin. More than 120 mutations have been identified for this gene, many of which are known to cause antithrombin-III deficiency.

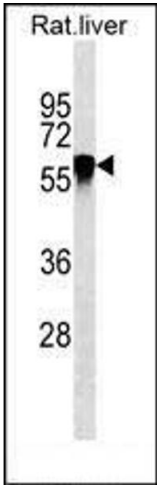
Molecular Weight:	52602
Gene ID:	462
NCBI Accession:	NP_000479
UniProt:	P01008

Application Details

Application Notes:	WB: 1:100~1600
Restrictions:	For Research Use only

Handling

Format:	Liquid
Buffer:	Mouse monoclonal antibody supplied in crude ascites with 0.09 % (W/V) sodium azide.
Preservative:	Sodium azide
Precaution of Use:	This product contains Sodium azide: a POISONOUS AND HAZARDOUS SUBSTANCE which should be handled by trained staff only.
Storage:	4 °C,-20 °C
Storage Comment:	SERPINC1 Antibody(Ascites) can be refrigerated at 2-8 °C for up to 6 months. For long term storage, keep at -20 °C.
Expiry Date:	6 months



Western Blotting

Image 1. SERPINC1 Antibody ABIN1539904 western blot analysis in rat liver tissue lysates (35 µg/lane). This demonstrates the SERPINC1 antibody detected the SERPINC1 protein (arrow).