

Datasheet for ABIN1539905

**anti-SERPINC1 antibody (AA 364-393)**[Go to Product page](#)**1** Image

## Overview

Quantity:	400 µL
Target:	SERPINC1
Binding Specificity:	AA 364-393
Reactivity:	Human, Rat
Host:	Mouse
Clonality:	Monoclonal
Conjugate:	This SERPINC1 antibody is un-conjugated
Application:	Western Blotting (WB)

## Product Details

Immunogen:	This SERPINC1 antibody is generated from mice immunized with a KLH conjugated synthetic peptide between 364-393 amino acids from human SERPINC1.
Clone:	435CT4-7-4
Isotype:	IgG1
Purification:	This antibody is prepared by Saturated Ammonium Sulfate (SAS) precipitation followed by dialysis against PBS.

## Target Details

Target:	SERPINC1
Alternative Name:	SERPINC1 ( <a href="#">SERPINC1 Products</a> )

## Target Details

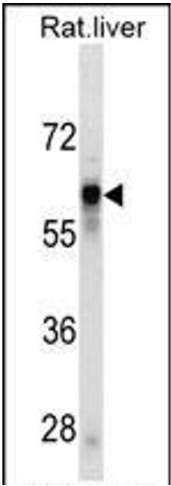
Background:	The protein encoded by this gene is a plasma protease inhibitor and a member of the serpin superfamily. This protein inhibits thrombin as well as other activated serine proteases of the coagulation system, and it regulates the blood coagulation cascade. The protein includes two functional domains: the heparin binding-domain at the N-terminus of the mature protein, and the reactive site domain at the C-terminus. The inhibitory activity is enhanced by the presence of heparin. More than 120 mutations have been identified for this gene, many of which are known to cause antithrombin-III deficiency.
Molecular Weight:	52602
Gene ID:	462
NCBI Accession:	<a href="#">NP_000479</a>
UniProt:	<a href="#">P01008</a>

## Application Details

Application Notes:	WB: 1:100~500
Restrictions:	For Research Use only

## Handling

Format:	Liquid
Buffer:	Purified polyclonal antibody supplied in PBS with 0.09 % (W/V) sodium azide.
Preservative:	Sodium azide
Precaution of Use:	This product contains Sodium azide: a POISONOUS AND HAZARDOUS SUBSTANCE which should be handled by trained staff only.
Storage:	4 °C,-20 °C
Storage Comment:	SERPINC1 Antibody can be refrigerated at 2-8 °C for up to 6 months. For long term storage, keep at -20 °C.
Expiry Date:	6 months



Western Blotting

**Image 1.** SERPINC1 Antibody (ABIN1539905 and ABIN2843858) western blot analysis in rat liver tissue lysates (35 µg/lane). This demonstrates the SERPINC1 antibody detected the SERPINC1 protein (arrow).