

Datasheet for ABIN1539914  
**anti-MX1 antibody (AA 617-646)**[Go to Product page](#)[1 Image](#)[2 Publications](#)

## Overview

Quantity:	400 µL
Target:	MX1
Binding Specificity:	AA 617-646
Reactivity:	Human
Host:	Mouse
Clonality:	Monoclonal
Application:	Western Blotting (WB)

## Product Details

Immunogen:	This MX1 antibody is generated from mice immunized with a KLH conjugated synthetic peptide between 617-646 amino acids from human MX1.
Clone:	474CT4-1-5
Isotype:	IgG2b
Predicted Reactivity:	Pig
Purification:	This antibody is purified through a protein G column, followed by dialysis against PBS.

## Target Details

Target:	MX1
Alternative Name:	MX1 ( <a href="#">MX1 Products</a> )
Background:	In mouse, the interferon-inducible Mx protein is responsible for a specific antiviral state against

## Target Details

influenza virus infection. The protein encoded by this gene is similar to the mouse protein as determined by its antigenic relatedness, induction conditions, physicochemical properties, and amino acid analysis. This cytoplasmic protein is a member of both the dynamin family and the family of large GTPases. Two transcript variants encoding the same protein have been found for this gene.

Molecular Weight:	75520
Gene ID:	4599
NCBI Accession:	<a href="#">NP_001138397</a> , <a href="#">NP_001171517</a> , <a href="#">NP_002453</a>
UniProt:	<a href="#">P20591</a>

## Application Details

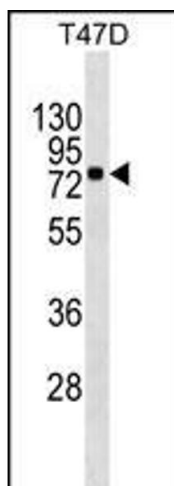
Application Notes:	WB: 1:100~500
Restrictions:	For Research Use only

## Handling

Format:	Liquid
Buffer:	Purified monoclonal antibody supplied in PBS with 0.09 % (W/V) sodium azide.
Preservative:	Sodium azide
Precaution of Use:	This product contains Sodium azide: a POISONOUS AND HAZARDOUS SUBSTANCE which should be handled by trained staff only.
Storage:	4 °C,-20 °C
Storage Comment:	MX1 Antibody can be refrigerated at 2-8 °C for up to 6 months. For long term storage, keep at -20 °C.
Expiry Date:	6 months

## Publications

Product cited in:	Chen, Zou, Zong, Meng, An, Yang: "Anti-human CD138 monoclonal antibodies and their bispecific formats: generation and characterization." in: <b>Immunopharmacology and immunotoxicology</b> , Vol. 38, Issue 3, pp. 175-83, (2017) ( <a href="#">PubMed</a> ).
-------------------	--



#### Western Blotting

**Image 1.** MX1 Antibody (ABIN1539914 and ABIN2843862) western blot analysis in T47D cell line lysates (35  $\mu$ g/lane). This demonstrates the MX1 antibody detected the MX1 protein (arrow).