

Datasheet for ABIN1539921
anti-CYP1A2 antibody (AA 255-282)



[Go to Product page](#)

1 Image

Overview

Quantity:	0.1 mL
Target:	CYP1A2
Binding Specificity:	AA 255-282
Reactivity:	Human
Host:	Mouse
Clonality:	Monoclonal
Conjugate:	This CYP1A2 antibody is un-conjugated
Application:	Western Blotting (WB)

Product Details

Immunogen:	This CYP1A2 antibody is generated from mice immunized with a KLH conjugated synthetic peptide between 255-282 amino acids from human CYP1A2.
Clone:	499CT13-2-2
Isotype:	IgG3
Purification:	Mouse monoclonal antibody supplied in crude ascites with 0.09% (W/V) sodium azide.

Target Details

Target:	CYP1A2
Alternative Name:	CYP1A2 (CYP1A2 Products)
Background:	This gene encodes a member of the cytochrome P450 superfamily of enzymes. The

Target Details

cytochrome P450 proteins are monooxygenases which catalyze many reactions involved in drug metabolism and synthesis of cholesterol, steroids and other lipids. The protein encoded by this gene localizes to the endoplasmic reticulum and its expression is induced by some polycyclic aromatic hydrocarbons (PAHs), some of which are found in cigarette smoke. The enzyme's endogenous substrate is unknown, however, it is able to metabolize some PAHs to carcinogenic intermediates. Other xenobiotic substrates for this enzyme include caffeine, aflatoxin B1, and acetaminophen. The transcript from this gene contains four Alu sequences flanked by direct repeats in the 3' untranslated region.

Molecular Weight: 58407

Gene ID: 1544

NCBI Accession: [NP_000752](#)

UniProt: [P05177](#)

Application Details

Application Notes: WB: 1:500~2000

Restrictions: For Research Use only

Handling

Format: Liquid

Buffer: Mouse monoclonal antibody supplied in crude ascites with 0.09 % (W/V) sodium azide.

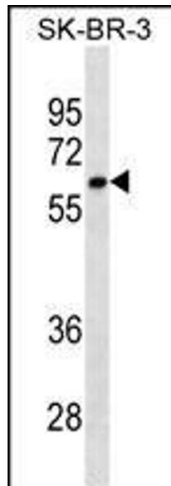
Preservative: Sodium azide

Precaution of Use: This product contains Sodium azide: a POISONOUS AND HAZARDOUS SUBSTANCE which should be handled by trained staff only.

Storage: 4 °C,-20 °C

Storage Comment: CYP1A2 Antibody(Ascites) can be refrigerated at 2-8 °C for up to 6 months. For long term storage, keep at -20 °C.

Expiry Date: 6 months



Western Blotting

Image 1. CYP1A2 Antibody ABIN1539921 western blot analysis in SK-BR-3 cell line lysates (35 µg/lane). This demonstrates the CYP1A2 antibody detected the CYP1A2 protein (arrow).