

Datasheet for ABIN1539926
anti-IGF2 antibody (AA 39-68)[Go to Product page](#)

1 Image

Overview

Quantity:	0.1 mL
Target:	IGF2
Binding Specificity:	AA 39-68
Reactivity:	Human
Host:	Mouse
Clonality:	Monoclonal
Application:	Western Blotting (WB)

Product Details

Immunogen:	This IGF2 antibody is generated from mice immunized with a KLH conjugated synthetic peptide between 39-68 amino acids from human IGF2.
Clone:	519CT14-3-6
Isotype:	IgM
Purification:	Mouse monoclonal antibody supplied in crude ascites with 0.09% (W/V) sodium azide.

Target Details

Target:	IGF2
Alternative Name:	IGF2 (IGF2 Products)
Background:	This gene encodes a member of the insulin family of polypeptide growth factors, which are involved in development and growth. It is an imprinted gene, expressed only from the paternal allele, and epigenetic changes at this locus are associated with Wilms tumour, Beckwith-

Target Details

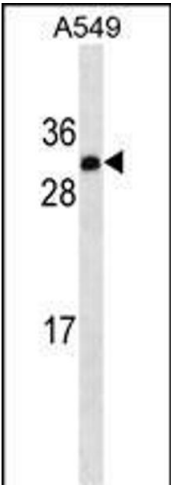
	Wiedemann syndrome, rhabdomyosarcoma, and Silver-Russell syndrome. A read-through INS-IGF2 gene exists, whose 5' region overlaps the INS gene and the 3' region overlaps this gene. Alternatively spliced transcript variants encoding different isoforms have been found for this gene.
Molecular Weight:	20140
Gene ID:	3481
NCBI Accession:	NP_000603 , NP_001007140 , NP_001121070
UniProt:	P01344
Pathways:	Hormone Activity , Regulation of Hormone Metabolic Process , Regulation of Hormone Biosynthetic Process , Regulation of Carbohydrate Metabolic Process , Activated T Cell Proliferation

Application Details

Application Notes:	WB: 1:500~8000
Restrictions:	For Research Use only

Handling

Format:	Liquid
Buffer:	Mouse monoclonal antibody supplied in crude ascites with 0.09 % (W/V) sodium azide.
Preservative:	Sodium azide
Precaution of Use:	This product contains Sodium azide: a POISONOUS AND HAZARDOUS SUBSTANCE which should be handled by trained staff only.
Storage:	4 °C,-20 °C
Storage Comment:	IGF2 Antibody(Ascites) can be refrigerated at 2-8 °C for up to 6 months. For long term storage, keep at -20 °C.
Expiry Date:	6 months



Western Blotting

Image 1. IGF2 Antibody ABIN1539926 western blot analysis in A549 cell line lysates (35 µg/lane). This demonstrates the IGF2 antibody detected the IGF2 protein (arrow).