

Datasheet for ABIN1539929
anti-CDKN1C antibody (AA 34-64)



[Go to Product page](#)

1 Image

Overview

Quantity:	0.1 mL
Target:	CDKN1C
Binding Specificity:	AA 34-64
Reactivity:	Human
Host:	Mouse
Clonality:	Monoclonal
Conjugate:	This CDKN1C antibody is un-conjugated
Application:	Western Blotting (WB)

Product Details

Immunogen:	This CDKN1C antibody is generated from mice immunized with a KLH conjugated synthetic peptide between 34-64 amino acids from human CDKN1C.
Clone:	522CT9-5-1
Isotype:	IgM
Purification:	Mouse monoclonal antibody supplied in crude ascites with 0.09% (W/V) sodium azide.

Target Details

Target:	CDKN1C
Alternative Name:	CDKN1C (CDKN1C Products)
Background:	This gene is imprinted, with preferential expression of the maternal allele. The encoded protein

Target Details

is a tight-binding, strong inhibitor of several G1 cyclin/Cdk complexes and a negative regulator of cell proliferation. Mutations in this gene are implicated in sporadic cancers and Beckwith-Wiedemann syndrome, suggesting that this gene is a tumor suppressor candidate. Three transcript variants encoding two different isoforms have been found for this gene.

Molecular Weight: 32177

Gene ID: 1028

NCBI Accession: [NP_000067](#), [NP_001116102](#), [NP_001116103](#)

UniProt: [P49918](#)

Pathways: [Cell Division Cycle](#), [Dopaminergic Neurogenesis](#)

Application Details

Application Notes: WB: 1:500~16000

Restrictions: For Research Use only

Handling

Format: Liquid

Buffer: Mouse monoclonal antibody supplied in crude ascites with 0.09 % (W/V) sodium azide.

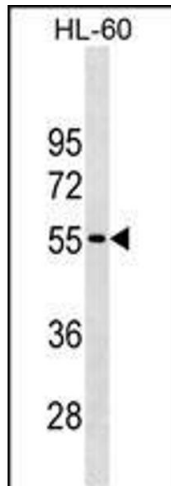
Preservative: Sodium azide

Precaution of Use: This product contains Sodium azide: a POISONOUS AND HAZARDOUS SUBSTANCE which should be handled by trained staff only.

Storage: 4 °C,-20 °C

Storage Comment: CDKN1C Antibody(Ascites) can be refrigerated at 2-8 °C for up to 6 months. For long term storage, keep at -20 °C.

Expiry Date: 6 months



Western Blotting

Image 1. CDKN1C Antibody ABIN1539929 western blot analysis in HL-60 cell line lysates (35 µg/lane). This demonstrates the CDKN1C antibody detected the CDKN1C protein (arrow).