

Datasheet for ABIN1539972  
**anti-HLA-B antibody (AA 62-90)**



[Go to Product page](#)

1 Image

## Overview

|                      |                                      |
|----------------------|--------------------------------------|
| Quantity:            | 400 µL                               |
| Target:              | HLA-B                                |
| Binding Specificity: | AA 62-90                             |
| Reactivity:          | Human                                |
| Host:                | Mouse                                |
| Clonality:           | Monoclonal                           |
| Conjugate:           | This HLA-B antibody is un-conjugated |
| Application:         | Western Blotting (WB)                |

## Product Details

|               |  |
|---------------|--|
| Immunogen:    | This HLA-B antibody is generated from mice immunized with a KLH conjugated synthetic peptide between 62-90 amino acids from human HLA-B. |
| Clone:        | 528CT10-4-1  |
| Isotype:      | IgM  |
| Purification: | This antibody is prepared by Euglobin precipitation followed by dialysis against PBS.  |

## Target Details

|                   |   |
|-------------------|---|
| Target:           | HLA-B   |
| Alternative Name: | HLA-B ( <a href="#">HLA-B Products</a> )  |
| Background:       | HLA-B belongs to the HLA class I heavy chain paralogues. This class I molecule is a |

## Target Details

heterodimer consisting of a heavy chain and a light chain (beta-2 microglobulin). The heavy chain is anchored in the membrane. Class I molecules play a central role in the immune system by presenting peptides derived from the endoplasmic reticulum lumen. They are expressed in nearly all cells. The heavy chain is approximately 45 kDa and its gene contains 8 exons. Exon 1 encodes the leader peptide, exon 2 and 3 encode the alpha1 and alpha2 domains, which both bind the peptide, exon 4 encodes the alpha3 domain, exon 5 encodes the transmembrane region and exons 6 and 7 encode the cytoplasmic tail. Polymorphisms within exon 2 and exon 3 are responsible for the peptide binding specificity of each class one molecule. Typing for these polymorphisms is routinely done for bone marrow and kidney transplantation. Hundreds of HLA-B alleles have been described.

Gene ID: 3106

UniProt: [P03989](#)

Pathways: [Regulation of Leukocyte Mediated Immunity](#), [Positive Regulation of Immune Effector Process](#), [Cancer Immune Checkpoints](#), [Human Leukocyte Antigen \(HLA\) in Adaptive Immune Response](#)

## Application Details

Application Notes: WB: 1:100~250

Restrictions: For Research Use only

## Handling

Format: Liquid

Buffer: Purified monoclonal antibody supplied in PBS with 0.09 % (W/V) sodium azide.

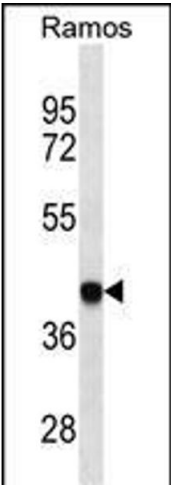
Preservative: Sodium azide

Precaution of Use: This product contains Sodium azide: a POISONOUS AND HAZARDOUS SUBSTANCE which should be handled by trained staff only.

Storage: 4 °C, -20 °C

Storage Comment: HLA-B Antibody can be refrigerated at 2-8 °C for up to 6 months. For long term storage, keep at -20 °C.

Expiry Date: 6 months



**Western Blotting**

**Image 1.** HLA-B Antibody (ABIN1539972 and ABIN2850473) western blot analysis in Ramos cell line lysates (35 µg/lane). This demonstrates the HLA-B antibody detected the HLA-B protein (arrow).