

Datasheet for ABIN1539992  
**anti-Selectin E/CD62e antibody**[Go to Product page](#)

## 1 Image

## Overview

Quantity:	0.1 mL
Target:	Selectin E/CD62e (SELE)
Reactivity:	Human
Host:	Mouse
Clonality:	Monoclonal
Application:	Western Blotting (WB)

## Product Details

Immunogen:	Purified His-tagged SELE protein(Fragment) was used to produced this monoclonal antibody.
Clone:	537CT2-2-2
Isotype:	IgM
Purification:	Mouse monoclonal antibody supplied in crude ascites with 0.09% (W/V) sodium azide.

## Target Details

Target:	Selectin E/CD62e (SELE)
Alternative Name:	SELE ( <a href="#">SELE Products</a> )
Background:	The protein encoded by this gene is found in cytokine-stimulated endothelial cells and is thought to be responsible for the accumulation of blood leukocytes at sites of inflammation by mediating the adhesion of cells to the vascular lining. It exhibits structural features such as the presence of lectin- and EGF-like domains followed by short consensus repeat (SCR) domains that contain 6 conserved cysteine residues. These proteins are part of the selectin family of cell

## Target Details

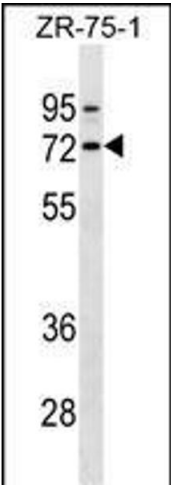
	adhesion molecules. Adhesion molecules participate in the interaction between leukocytes and the endothelium and appear to be involved in the pathogenesis of atherosclerosis.
Molecular Weight:	66655
Gene ID:	6401
NCBI Accession:	<a href="#">NP_000441</a>
UniProt:	<a href="#">P16581</a>
Pathways:	<a href="#">Thromboxane A2 Receptor Signaling</a>

## Application Details

Application Notes:	WB: 1:100~400
Restrictions:	For Research Use only

## Handling

Format:	Liquid
Buffer:	Mouse monoclonal antibody supplied in crude ascites with 0.09 % (W/V) sodium azide.
Preservative:	Sodium azide
Precaution of Use:	This product contains Sodium azide: a POISONOUS AND HAZARDOUS SUBSTANCE which should be handled by trained staff only.
Storage:	4 °C,-20 °C
Storage Comment:	SELE Antibody (Ascites) can be refrigerated at 2-8 °C for up to 6 months. For long term storage, keep at -20 °C.
Expiry Date:	6 months



Western Blotting

**Image 1.** SELE Antibody (Ascites) ABIN1539992 western blot analysis in ZR-75-1 cell line lysates (35 µg/lane). This demonstrates the SELE antibody detected the SELE protein (arrow).