

Datasheet for ABIN1539995  
**anti-Syndecan 1 antibody (C-Term)**

7 Images

1 Publication

[Go to Product page](#)

## Overview

Quantity:	0.1 mL
Target:	Syndecan 1 (SDC1)
Binding Specificity:	AA 210-238, C-Term
Reactivity:	Human
Host:	Mouse
Clonality:	Monoclonal
Application:	Western Blotting (WB), Flow Cytometry (FACS), Immunofluorescence (IF)

## Product Details

Immunogen:	This CD138 antibody is generated from mice immunized with a KLH conjugated synthetic peptide between 210-238 amino acids from the C-terminal region of human CD138.
Clone:	587CT7-3-6-5
Isotype:	IgM
Purification:	Mouse monoclonal antibody supplied in crude ascites with 0.09% (W/V) sodium azide.

## Target Details

Target:	Syndecan 1 (SDC1)
Alternative Name:	CD138 ( <a href="#">SDC1 Products</a> )
Background:	The protein encoded by this gene is a transmembrane (type I) heparan sulfate proteoglycan and is a member of the syndecan proteoglycan family. The syndecans mediate cell binding, cell signaling, and cytoskeletal organization and syndecan receptors are required for internalization

## Target Details

of the HIV-1 tat protein. The syndecan-1 protein functions as an integral membrane protein and participates in cell proliferation, cell migration and cell-matrix interactions via its receptor for extracellular matrix proteins. Altered syndecan-1 expression has been detected in several different tumor types. While several transcript variants may exist for this gene, the full-length natures of only two have been described to date. These two represent the major variants of this gene and encode the same protein.

Molecular Weight: 32462

Gene ID: 6382

NCBI Accession: [NP\\_001006947](#), [NP\\_002988](#)

UniProt: [P18827](#)

Pathways: [Glycosaminoglycan Metabolic Process](#), [Regulation of Muscle Cell Differentiation](#), [Skeletal Muscle Fiber Development](#), [Lipid Metabolism](#)

## Application Details

Application Notes: IF: 1:10~50. IF: 1:10~50. IF: 1:10~50. WB: 1:500~8000. FC: 1:10~50. FC: 1:10~50. FC: 1:10~50

Restrictions: For Research Use only

## Handling

Format: Liquid

Buffer: Mouse monoclonal antibody supplied in crude ascites with 0.09 % (W/V) sodium azide.

Preservative: Sodium azide

Precaution of Use: This product contains Sodium azide: a POISONOUS AND HAZARDOUS SUBSTANCE which should be handled by trained staff only.

Storage: 4 °C,-20 °C

Storage Comment: CD138 Antibody (C-term)(Ascites) can be refrigerated at 2-8 °C for up to 6 months. For long term storage, keep at -20 °C.

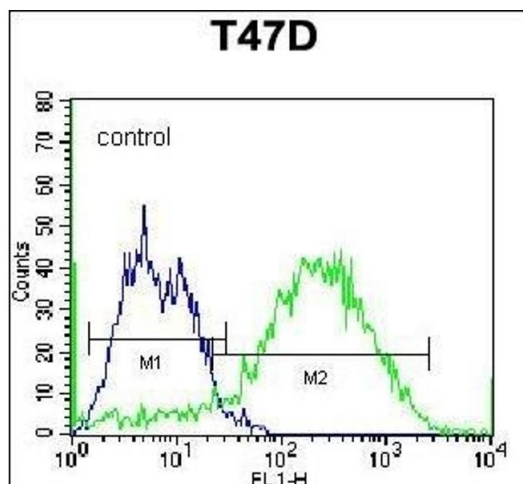
Expiry Date: 6 months

## Publications

Product cited in: Chen, Zou, Zong, Meng, An, Yang: "Anti-human CD138 monoclonal antibodies and their

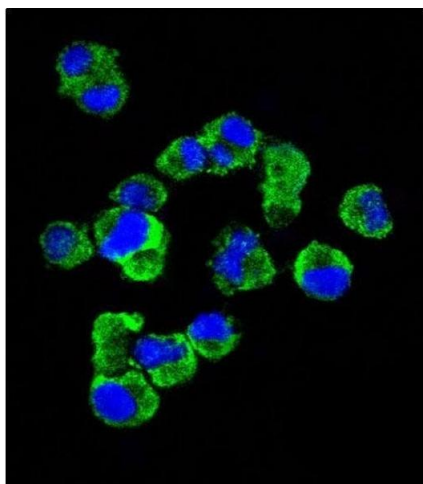
bispecific formats: generation and characterization." in: **Immunopharmacology and immunotoxicology**, Vol. 38, Issue 3, pp. 175-83, (2017) ([PubMed](#)).

## Images



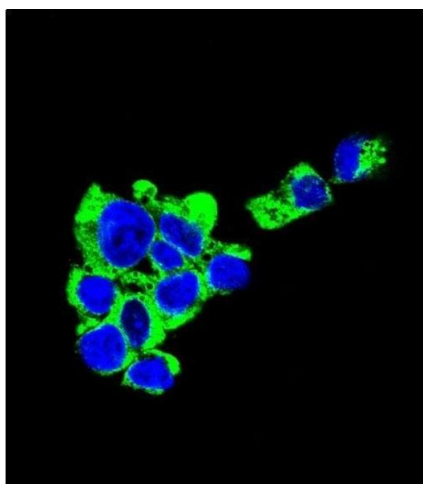
### Flow Cytometry

**Image 1.** C Antibody (C-term) (Ascites) ABIN1539995 flow cytometric analysis of T47D cells (right histogram) compared to a negative control cell (left histogram). Alexa Fluor® 488-conjugated donkey anti-mouse IgG secondary antibodies were used for the analysis



### Immunofluorescence

**Image 2.** Confocal immunofluorescent analysis of C Antibody (C-term) (Ascites) ABIN1539995 with cell followed by Alexa Fluor® 488-conjugated goat anti-mouse IgG (green). DI was used to stain the cell nuclear (blue).



### Immunofluorescence

**Image 3.** Confocal immunofluorescent analysis of C Antibody (C-term) (Ascites) ABIN1539995 with HepG2 cell followed by Alexa Fluor® 488-conjugated goat anti-mouse IgG (green). DI was used to stain the cell nuclear (blue).

Please check the [product details page](#) for more images. Overall 7 images are available for ABIN1539995.