

Datasheet for ABIN1540013  
**anti-Selectin E/CD62e antibody**[Go to Product page](#)

## 1 Image

## Overview

Quantity:	400 µL
Target:	Selectin E/CD62e (SELE)
Reactivity:	Human
Host:	Rabbit
Clonality:	Polyclonal
Application:	Western Blotting (WB)

## Product Details

Immunogen:	This TRAIL antibody is generated from rabbits immunized with a recombinant protein from the human TRAIL.
Clone:	RB38827
Isotype:	Ig Fraction
Purification:	This antibody is purified through a protein A column, followed by peptide affinity purification.

## Target Details

Target:	Selectin E/CD62e (SELE)
Alternative Name:	SELE ( <a href="#">SELE Products</a> )
Background:	The protein encoded by this gene is found in cytokine-stimulated endothelial cells and is thought to be responsible for the accumulation of blood leukocytes at sites of inflammation by mediating the adhesion of cells to the vascular lining. It exhibits structural features such as the presence of lectin- and EGF-like domains followed by short consensus repeat (SCR) domains

## Target Details

that contain 6 conserved cysteine residues. These proteins are part of the selectin family of cell adhesion molecules. Adhesion molecules participate in the interaction between leukocytes and the endothelium and appear to be involved in the pathogenesis of atherosclerosis.

Molecular Weight: 66655

Gene ID: 6401

NCBI Accession: [NP\\_000441](#)

UniProt: [P16581](#)

Pathways: [Thromboxane A2 Receptor Signaling](#)

## Application Details

Application Notes: WB: 1:1000

Restrictions: For Research Use only

## Handling

Format: Liquid

Buffer: Purified polyclonal antibody supplied in PBS with 0.09 % (W/V) sodium azide.

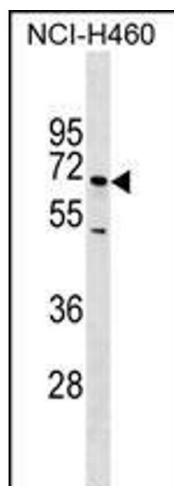
Preservative: Sodium azide

Precaution of Use: This product contains Sodium azide: a POISONOUS AND HAZARDOUS SUBSTANCE which should be handled by trained staff only.

Storage: 4 °C, -20 °C

Storage Comment: SELE Antibody can be refrigerated at 2-8 °C for up to 6 months. For long term storage, keep at -20 °C.

Expiry Date: 6 months



#### Western Blotting

**Image 1.** SELE Antibody (ABIN1540013 and ABIN2838045) western blot analysis in NCI- cell line lysates (35  $\mu$ g/lane). This demonstrates the SELE antibody detected the SELE protein (arrow).