

Datasheet for ABIN1543584

anti-Prostate Specific Antigen antibody**1** Validation[Go to Product page](#)

Overview

Quantity:	1 mg
Target:	Prostate Specific Antigen (PSA)
Reactivity:	Human
Host:	Mouse
Clonality:	Monoclonal
Conjugate:	This Prostate Specific Antigen antibody is un-conjugated
Application:	ELISA, Western Blotting (WB), Flow Cytometry (FACS), Dot Blot (DB)

Product Details

Immunogen:	Native PSA Antigen
Clone:	A5D5-1
Isotype:	IgG1
Purification:	Protein A affinity column

Target Details

Target:	Prostate Specific Antigen (PSA)
Alternative Name:	PSA (PSA Products)
Pathways:	Complement System

Application Details

Comment: Other Applications have not been tested.

Restrictions: For Research Use only

Handling

Format: Liquid

Concentration: 1.8 mg/mL

Buffer: PBS, pH 7.4, 0.09% sodium azide

Preservative: Sodium azide

Precaution of Use: This product contains sodium azide: a POISONOUS AND HAZARDOUS SUBSTANCE which should be handled by trained staff only.

Storage: -20 °C



Successfully validated (Flow Cytometry (FACS))

by [Flow Cytometry & Cell Separation Facility, Purdue University](#)

Report Number: 029617

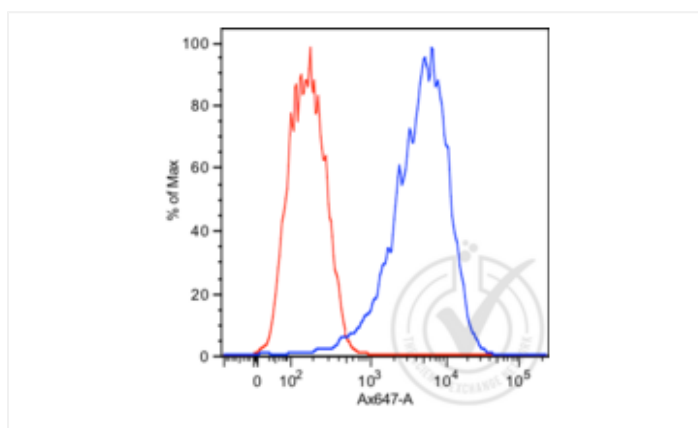
Date: Feb 22 2014

Lot Number:	FAPS-A5D5-0003
Method validated:	Flow Cytometry (FACS)
Positive Control:	LNCaP cells
Negative Control:	- DU145 cells - Jurkat cells
Notes:	Strong signal above isotype signal was observed in the positive control sample, while staining of similar level to isotype control was observed in both negative control samples.
Primary Antibody:	- Antibody: Prostate Specific Antigen (PSA) - Catalog number: ABIN1543584 - Supplier: Yashraj Biotechnology - Supplier catalog number: fpsamab-37/1 - Lot number: FAPS-A5D5-0003
Secondary Antibody:	- Antibody: F(ab') ₂ goat anti-mouse IgG-Alexa 647 - Supplier: Jackson ImmunoResearch - Catalog number: 115-606-146
Isotype:	- Antibody: mouse IgG1 - Supplier: BD Biosciences - Catalog number: 557273
Controls:	<ul style="list-style-type: none">• Positive control: LNCaP prostate tumor cell line• Negative control: DU145 prostate tumor cell line, Jurkat T cell leukemia cell line• Isotype control: cells treated with mouse IgG1 instead of the primary antibody to confirm that primary antibody binding is specific.
Protocol:	<ul style="list-style-type: none">• Positive and negative control cells were washed once with phosphate-buffered saline (PBS) and harvested with 0.05% trypsin / 0.025% EDTA.• Detached cells were washed and resuspended in 0.5 mL 1X PBS containing 0.5% BSA.• An equivalent amount of pre-warmed 4% paraformaldehyde was added and the cells were incubated for 10 min at 37°C.• Cells were washed in 1X PBS containing 0.5% BSA and resuspended in 1 mL of ice-cold 90% methanol for 30 min on ice.• Cells were spun out of the methanol and washed twice by resuspending in 1X PBS containing 0.5% BSA and 0.1% Tween 20• Cells were resuspended in 100 µL 1X PBS containing 0.5% BSA.• 1 µg of anti-PSA or mouse IgG1 isotype control were added to the cells and incubated for 30 min at room temperature• Cells were washed twice with PBS/BSA/Tween 20

- Cells were resuspended in 100 μ L 1X PBS containing 0.5% BSA
- Secondary antibody was added at a final dilution of 1:500 and incubated for 30 min at room temperature
- Cells were washed twice with PBS/BSA/Tween 20
- Cells were resuspended in 0.3 mL PBS/BSA
- Cells were analyzed on a FACS Aria III (BD Biosciences) using a red laser (640 nm excitation / 660 nm emission).

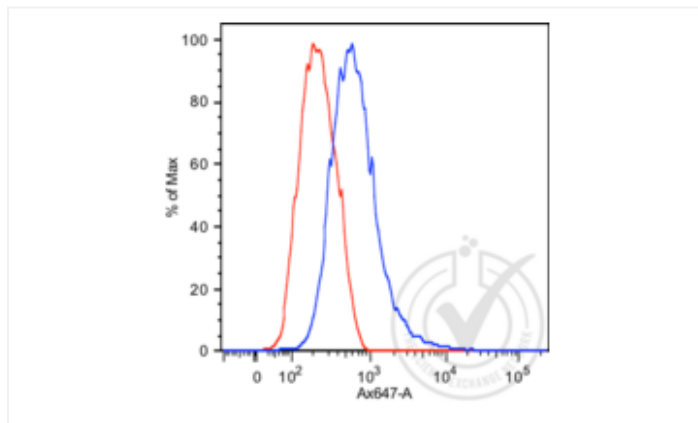
Experimental Notes: None

Images for Validation report #029617



Validation image no. 1 for anti-Prostate Specific Antigen (PSA) antibody (ABIN1543584)

Figure 1: LNCaP cells stained with anti-PSA (blue) or with isotype control (red).



Validation image no. 2 for anti-Prostate Specific Antigen (PSA) antibody (ABIN1543584)

Figure 2: DU145 cells stained with anti-PSA (blue) or with isotype control (red).

Validation image no. 3 for anti-Prostate Specific Antigen (PSA) antibody (ABIN1543584)

Figure 3: Jurkat cells stained with anti-PSA (blue) or with isotype control (red).

