

Datasheet for ABIN1558086

anti-CCR5 antibody (AA 1-22) (PE)[Go to Product page](#)**1** Image**3** Publications

Overview

| | |
|----------------------|--|
| Quantity: | 100 tests |
| Target: | CCR5 |
| Binding Specificity: | AA 1-22 |
| Reactivity: | Human |
| Host: | Mouse |
| Clonality: | Monoclonal |
| Conjugate: | This CCR5 antibody is conjugated to PE |
| Application: | Flow Cytometry (FACS) |

Product Details

| | |
|-----------------------------|---|
| Immunogen: | CCR5 peptide (Met1-Lys22) KLH conjugate |
| Clone: | T21-8 |
| Isotype: | IgG1 kappa |
| Specificity: | The mouse monoclonal antibody T21/8 recognizes an extracellular epitope on the N-terminus of CD195, an approximately 45 kDa G-protein coupled receptor 1 family protein expressed on resting T cells, monocytes, macrophages, and immature dendritic cells. |
| Cross-Reactivity (Details): | Human |
| Purification: | Purified antibody is conjugated with R-phycoerythrin (PE) under optimum conditions. Unconjugated antibody and free fluorochrome are removed by size-exclusion chromatography. |

Target Details

| | |
|-------------------|--|
| Target: | CCR5 |
| Alternative Name: | CD195 / CCR5 (CCR5 Products) |
| Background: | C-C motif chemokine receptor 5,CD195 / CCR5 (also known as CKR-5) is a receptor for inflammatory CC-chemokines (characterized by a pair of adjacent cysteine residues), such as MIP-1 alpha, MIP-1 beta, or RANTES. It is a G protein-associated seven-pass transmembrane protein expressed on resting T cells with memory/effector phenotype, monocytes, macrophages and immature dendritic cells. This chemokine receptor regulates the activation and directed migration of leukocytes. Importantly, along with CD4, CD195 / CCR5 functions as a major receptor for HIV. Their ligand is the viral glycoprotein gp120.,CKR5, CCR5, CCCKR5, CMKBR5, IDDM22, CC-CKR-5 |
| Gene ID: | 1234 |
| UniProt: | P51681 |
| Pathways: | Cellular Response to Molecule of Bacterial Origin , cAMP Metabolic Process , Regulation of Cell Size |

Application Details

| | |
|--------------------|---|
| Application Notes: | Flow cytometry: The reagent is designed for analysis of human blood cells using 10 µL reagent / 100 µL of whole blood or 10 ⁶ cells in a suspension. The content of a vial (1 ml) is sufficient for 100 tests. |
| Comment: | The purified antibody is conjugated with R-Phycoerythrin (PE) under optimum conditions. The conjugate is purified by size-exclusion chromatography and adjusted for direct use. No reconstitution is necessary. |
| Restrictions: | For Research Use only |

Handling

| | |
|--------------------|--|
| Reconstitution: | No reconstitution is necessary. |
| Buffer: | Stabilizing phosphate buffered saline (PBS), pH 7.4, 15 mM sodium azide |
| Preservative: | Sodium azide |
| Precaution of Use: | This product contains Sodium azide: a POISONOUS AND HAZARDOUS SUBSTANCE which should be handled by trained staff only. |
| Handling Advice: | Do not freeze. |

Handling

Avoid prolonged exposure to light.

Storage: 4 °C

Storage Comment: Store at 2-8°C. Protect from prolonged exposure to light. Do not freeze.

Publications

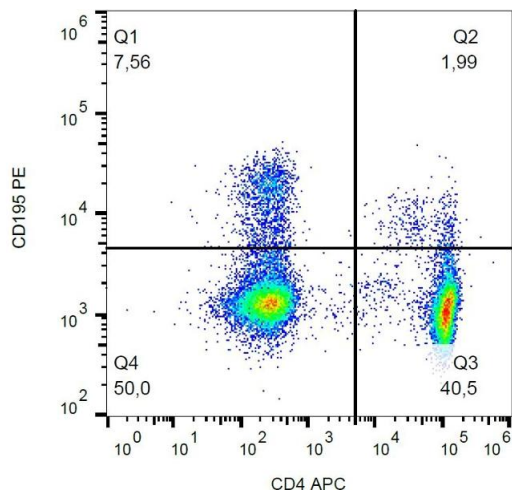
Product cited in:

Mascalchi, Lamort, Salomé, Dumas: "Single Particle Tracking reveals two distinct environments for CD4 receptors at the surface of living T lymphocytes." in: **Biochemical and biophysical research communications**, Vol. 417, Issue 1, pp. 409-13, (2012) ([PubMed](#)).

Monde, Maeda, Tanaka, Harada, Yusa: "Gp120 V3-dependent impairment of R5 HIV-1 infectivity due to virion-incorporated CCR5." in: **The Journal of biological chemistry**, Vol. 282, Issue 51, pp. 36923-32, (2007) ([PubMed](#)).

Hüttenrauch, Pollok-Kopp, Oppermann: "G protein-coupled receptor kinases promote phosphorylation and beta-arrestin-mediated internalization of CCR5 homo- and hetero-oligomers." in: **The Journal of biological chemistry**, Vol. 280, Issue 45, pp. 37503-15, (2005) ([PubMed](#)).

Images



Flow Cytometry

Image 1. Flow cytometry analysis (surface staining) of CD195 in human peripheral blood with anti-CD195 (T21/8) PE.