

Datasheet for ABIN1558257  
**anti-Fc epsilon RI/FCER1A antibody**



[Go to Product page](#)

2 Images

## Overview

Quantity:	100 µg
Target:	Fc epsilon RI/FCER1A (FCER1A)
Reactivity:	Human
Host:	Mouse
Clonality:	Monoclonal
Application:	Flow Cytometry (FACS), Western Blotting (WB), ELISA, Functional Studies (Func)

## Product Details

Immunogen:	Recombinant human FCER1A
Clone:	IM-2-NBS020122
Isotype:	IgG1 kappa
Characteristics:	The antibody recognizes an epitope within the $\alpha 2$ domain of the human high affinity IgE receptor (FceRI $\alpha$ ). It inhibits binding of IgE to this receptor and is suitable to detect receptors expressed on primary cells and cell lines (e.g mast cells and basophils). It can also be used as weak to moderate cross-linking agent for IgE-independent triggering of effector cells and to detect FceRI $\alpha$ in ELISA and W-blot.
Purification:	Affinity - purified from cell culture supernatant by Immunoaffinity Chromatography on anti-mouse IgG1 agarose
Purity:	98 % (Gel Permeation Chromatography)
Sterility:	Sterile filtered

## Target Details

---

Target:	Fc epsilon RI/FCER1A (FCER1A)
Alternative Name:	FCER1A ( <a href="#">FCER1A Products</a> )
Pathways:	<a href="#">Fc-epsilon Receptor Signaling Pathway</a> , <a href="#">Regulation of Leukocyte Mediated Immunity</a> , <a href="#">Positive Regulation of Immune Effector Process</a>

## Application Details

---

Application Notes:	Can be used for functional mast cell / basophil assays
Restrictions:	For Research Use only

## Handling

---

Concentration:	1 mg/mL
Buffer:	PBS, pH=7.2, 0.1 % NaN <sub>3</sub>
Preservative:	Sodium azide
Precaution of Use:	WARNING: Reagents contain sodium azide. Sodium azide is very toxic if ingested or inhaled. Avoid contact with skin, eyes, or clothing. Wear eye or face protection when handling. If skin or eye contact occurs, wash with copious amounts of water. If ingested or inhaled, contact a physician immediately. Sodium azide yields toxic hydrazoic acid under acidic conditions. Dilute azide-containing compounds in running water before discarding to avoid accumulation of potentially explosive deposits in lead or copper plumbing.
Storage:	4 °C/-20 °C
Storage Comment:	Store undiluted at 2-8°C. For long term storage, aliquot and store at -20°C or -80°C

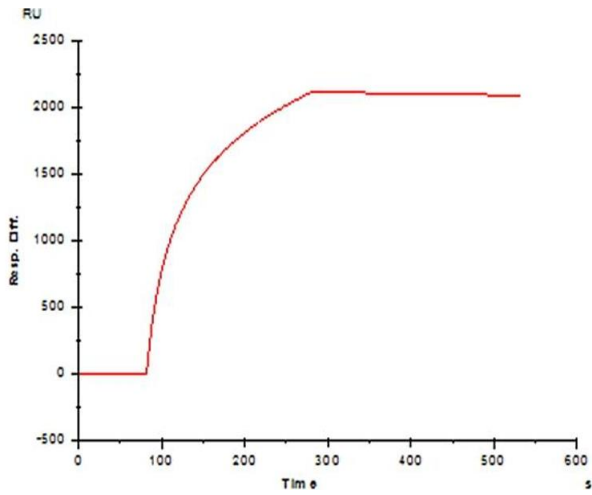


Image 1.

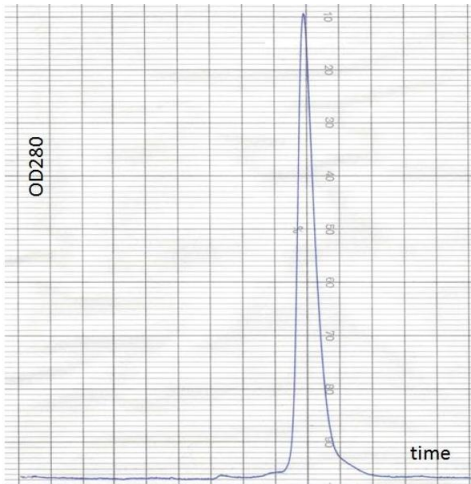


Image 2.