

Datasheet for ABIN1558260
anti-Fc epsilon RI/FCER1A antibody



[Go to Product page](#)

2 Images

Overview

Quantity:	100 µg
Target:	Fc epsilon RI/FCER1A (FCER1A)
Reactivity:	Human
Host:	Mouse
Clonality:	Monoclonal
Application:	Flow Cytometry (FACS), Western Blotting (WB), ELISA, Functional Studies (Func)

Product Details

Immunogen:	Recombinant human FCER1A
Clone:	IM-2-NBS020122
Isotype:	IgG1 kappa
Characteristics:	The antibody recognizes an epitope within the $\alpha 2$ domain of the human high affinity IgE receptor (FceRI α). It inhibits binding of IgE to this receptor and is suitable to detect receptors expressed on primary cells and cell lines (e.g mast cells and basophils). It can also be used as weak to moderate cross-linking agent for IgE-independent triggering of effector cells and to detect FceRI α in ELISA and W-blots.
Purification:	Affinity - purified from cell culture supernatant by Immunoaffinity Chromatography on anti-mouse IgG1 agarose
Purity:	98 % (Gel Permeation Chromatography)
Sterility:	Sterile filtered

Target Details

Target:	Fc epsilon RI/FCER1A (FCER1A)
Alternative Name:	FCER1A (FCER1A Products)
Pathways:	Fc-epsilon Receptor Signaling Pathway , Regulation of Leukocyte Mediated Immunity , Positive Regulation of Immune Effector Process

Application Details

Application Notes:	Can be used for functional mast cell / basophil assays
Restrictions:	For Research Use only

Handling

Concentration:	1 mg/mL
Buffer:	PBS, pH=7.2, sterile filtered, contains no NaN3
Preservative:	Azide free
Handling Advice:	Handle under sterile conditions, the mAb is formulated in sterile buffer solution and does not contain sodium azide as preservative.
Storage:	4 °C/-20 °C
Storage Comment:	Store undiluted at 2-8°C. For long term storage, aliquot and store at -20°C or -80°C

Images

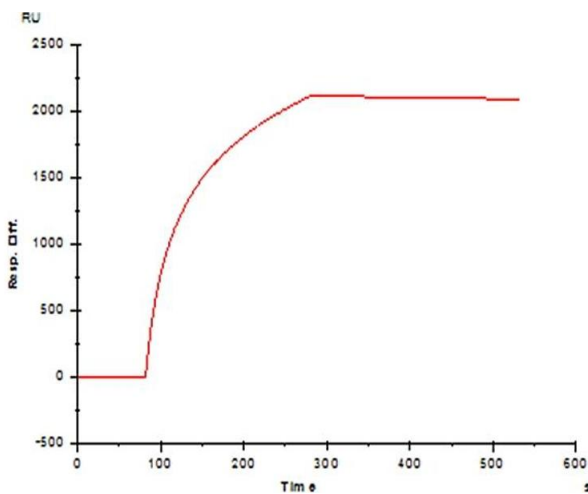


Image 1.

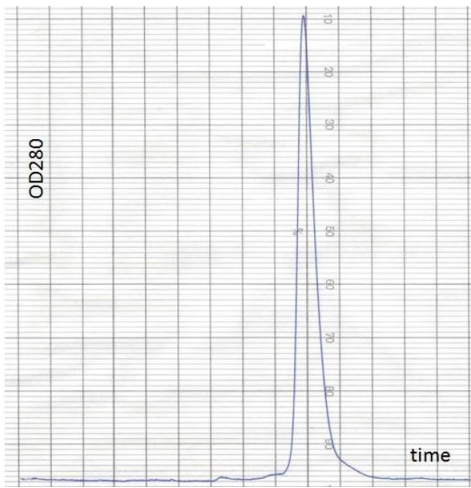


Image 2.