



Datasheet for ABIN1573881

anti-His Tag antibody

3 Images

16 Publications



[Go to Product page](#)

Overview

Quantity:	40 µg
Target:	His Tag
Reactivity:	Please inquire
Host:	Rabbit
Clonality:	Polyclonal
Conjugate:	This His Tag antibody is un-conjugated
Application:	Western Blotting (WB), ELISA

Product Details

Immunogen:	His epitope tag peptide HHHHHH conjugated - KLH
Sequence:	HHHHHH
Isotype:	IgG
Specificity:	Rabbit Anti-His-tag Polyclonal Antibody specifically reacts with fusion proteins containing either amino- or carboxy-terminal His epitope tags.
Purification:	Immunoaffinity chromatography

Target Details

Target:	His Tag
Alternative Name:	His-tag (His Tag Products)
Target Type:	Tag

Target Details

Background: Rabbit Anti-His-tag Polyclonal Antibody recognizes the His tag placed at N-terminal, C-terminal, and internal regions of targeted proteins in transfected or transformed cells. Short-sequence epitope tags are common in the study of protein expression in several different expression systems. In particular, the His tag on the expressed recombinant proteins allows for efficient coupling to Ni²⁺ affinity resins and purification by single step chromatography.

Application Details

Application Notes: Working concentrations for specific applications should be determined by the investigator. The appropriate concentrations may be affected by secondary antibody affinity, antigen concentration, the sensitivity of the method of detection, temperature, the length of the incubations, and other factors. The suitability of this antibody for applications other than those listed below has not been determined. The following concentration ranges are recommended starting points for this product.

ELISA: 0.05-0.2 µg/mL

Western blot: 0.1-1.0 µg/mL Western blot using ONE-HOUR Western™ Kit: For quick results, ONE-HOUR Western™ Kit is recommended. 10 µg of this antibody is mixed with 10 mL of WB solution for 8 cm x 8 cm membrane. Other applications: user-optimized

Restrictions: For Research Use only

Handling

Format: Lyophilized

Buffer: PBS, pH 7.4, containing 0.02 % Sodium azide

Preservative: Sodium azide

Precaution of Use: WARNING: Reagents contain sodium azide. Sodium azide is very toxic if ingested or inhaled. Avoid contact with skin, eyes, or clothing. Wear eye or face protection when handling. If skin or eye contact occurs, wash with copious amounts of water. If ingested or inhaled, contact a physician immediately. Sodium azide yields toxic hydrazoic acid under acidic conditions. Dilute azide-containing compounds in running water before discarding to avoid accumulation of potentially explosive deposits in lead or copper plumbing.

Storage: 4 °C/-20 °C

Storage Comment: The antibody is stable in lyophilized form if stored at -20°C or below. The reconstituted antibody can be stored for 2-3 weeks at 2-8°C. For long term storage, aliquot and store at -20°C or below.

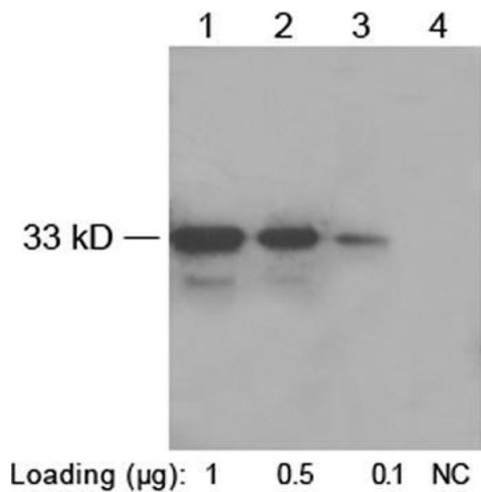
Avoid repeated freezing and thawing cycles.

Publications

Product cited in: Sun, Ziady: "Real-time imaging of gene delivery and expression with DNA nanoparticle technologies." in: **Methods in molecular biology (Clifton, N.J.)**, Vol. 544, pp. 525-46, (2009) ([PubMed](#)).

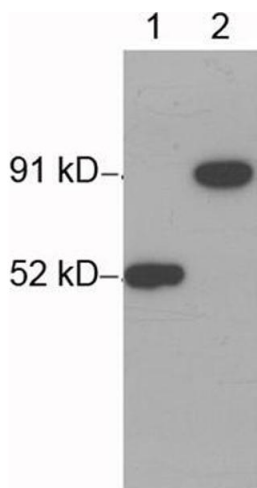
There are more publications referencing this product on: [Product page](#)

Images



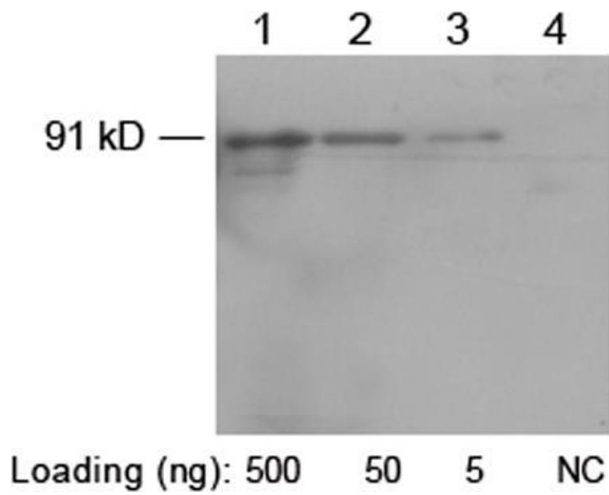
Western Blotting

Image 1. Western blot analysis of His-fusion protein (MW~33 kD) using 1 µg/mL Rabbit Anti-His-tag Polyclonal Antibody (ABIN398410) Lane 1-3: N-terminal His-fusion protein Lane 4: Negative E. coli cell lysate Secondary antibody: Goat Anti-Rabbit IgG (H&L) [HRP] Polyclonal Antibody (ABIN398323, 1: 20,000) The signal was developed with LumiSensor™ HRP Substrate Kit (ABIN769939)



Western Blotting

Image 2. Western blot analysis of His-fusion protein (MW~91 kD) using 1 µg/mL Rabbit Anti-His-tag Polyclonal Antibody (ABIN398410) Lane 1: His-tag fusion protein expressed in E. coli lysate Lane 2: C-term His-tag fusion protein expressed in E. coli cell lysate The signal was developed with One-Step Western™ Basic Kit (ABIN491504)



Western Blotting

Image 3. Western blot analysis of His-fusion protein (MW~91 kD) using 1 µg/mL Rabbit Anti-His-tag Polyclonal Antibody (ABIN398410) Lane 1-3: C-terminal His-fusion protein pfu-His Lane 4: Negative E. coli cell lysate Secondary antibody: Goat Anti-Rabbit IgG (H&L) [HRP] Polyclonal Antibody (ABIN398323, 1: 20,000) The signal was developed with LumiSensor™ HRP Substrate Kit (ABIN769939)