

Datasheet for ABIN1573889
anti-GST-Tag antibody (Biotin)



[Go to Product page](#)

1 Image

Overview

Quantity:	100 µg
Target:	GST-Tag
Reactivity:	Schistosoma japonicum
Host:	Rabbit
Clonality:	Polyclonal
Conjugate:	This GST-Tag antibody is conjugated to Biotin
Application:	Western Blotting (WB), ELISA

Product Details

Immunogen:	Recombinant Glutathione S-Transferase (GST) from Schistosoma japonicum
Isotype:	IgG
Specificity:	This antibody is specific for the GST protein from Schistosoma japonicum and is useful for detecting GST and GST-fusion proteins. Cross-reactivity with cell lysate of E. coli bacteria, sf21 cell and yeast have not been observed.
Cross-Reactivity (Details):	This antibody is specific for the GST protein from Schistosoma japonicum and is useful for detecting GST and GST-fusion proteins. Cross-reactivity with cell lysate of E. coli bacteria, sf21 cell and yeast have not been observed.
Purification:	Immunoaffinity chromatography

Target Details

Target:	GST-Tag
---------	---------

Target Details

Abstract:	GST-Tag Products
Target Type:	Tag
Background:	Rabbit Anti-GST-tag [Biotin] Polyclonal Antibody is highly purified from rabbit antiserum by immunoaffinity chromatography and then conjugated to biotin.

Application Details

Application Notes: Working concentrations for specific applications should be determined by the investigator. The appropriate concentrations may be affected by secondary antibody affinity, antigen concentration, the sensitivity of the method of detection, temperature, the length of the incubations, and other factors. The suitability of this antibody for applications other than those listed below has not been determined. The following concentration ranges are recommended starting points for this product.

ELISA: 0.01-0.1 µg/mL

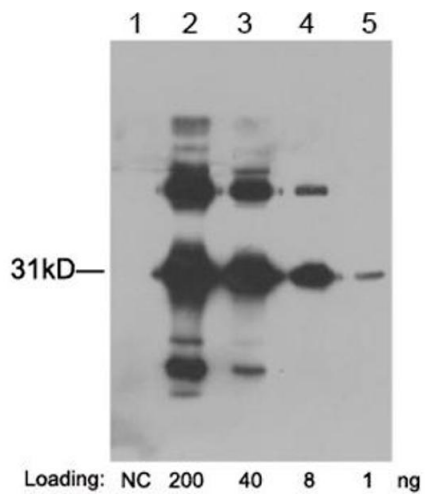
Western blot: 0.1-1.0 µg/mL

Other applications: user-optimized

Restrictions: For Research Use only

Handling

Format:	Liquid
Buffer:	PBS, pH 7.4, containing 1 % BSA and 0.02 % sodium azide
Preservative:	Sodium azide
Precaution of Use:	WARNING: Reagents contain sodium azide. Sodium azide is very toxic if ingested or inhaled. Avoid contact with skin, eyes, or clothing. Wear eye or face protection when handling. If skin or eye contact occurs, wash with copious amounts of water. If ingested or inhaled, contact a physician immediately. Sodium azide yields toxic hydrazoic acid under acidic conditions. Dilute azide-containing compounds in running water before discarding to avoid accumulation of potentially explosive deposits in lead or copper plumbing.
Storage:	4 °C/-20 °C
Storage Comment:	The antibody is stable for 2-3 weeks if stored at 2-8°C. For long term storage, aliquot and store at -20°C or below. Avoid repeated freezing and thawing cycles.



Western Blotting

Image 1. Lane 1: Negative E. coli lysate Lane 2-5: GST-fusion protein in E.coli lysate (~31 KD) Detect Antibody: 1 μ g/mL Rabbit Anti-GST-tag [Biotin] Polyclonal Antibody (ABIN398429) Secondary Reagent: Streptavidin-HRP (M00091, 1: 5,000) The signal was developed with LumiSensor™ HRP Substrate Kit (ABIN769939)