

Datasheet for ABIN1573897
anti-Glu-Glu Tag antibody[Go to Product page](#)

2 Images

1 Publication

Overview

Quantity:	100 µg
Target:	Glu-Glu Tag
Reactivity:	Please inquire
Host:	Rabbit
Clonality:	Polyclonal
Conjugate:	This Glu-Glu Tag antibody is un-conjugated
Application:	Western Blotting (WB), ELISA

Product Details

Immunogen:	Glu-Glu epitope tag peptide (EYMPME) conjugated - KLH
Sequence:	EYMPME
Isotype:	IgG
Specificity:	Rabbit Anti-Glu-Glu--tag Polyclonal Antibody recognizes either internal or C-terminal Glu-Glu tagged fusion proteins.
Purification:	Immunoaffinity chromatography

Target Details

Target:	Glu-Glu Tag
Alternative Name:	Glu-Glu-tag (Glu-Glu Tag Products)
Target Type:	Tag

Target Details

Background:	Well-characterized antibodies for epitope tags consisting of short sequences are widely used in the study of protein expression in various systems. The Glu-Glu-tag is an epitope tag consisting of a six-residue peptide, EYMPME, derived from the polyoma virus medium T antigen. Rabbit Anti-Glu-Glu-tag Polyclonal Antibody is developed in rabbit hosts using a synthetic Glu-Glu-tag epitope peptide conjugated to KLH.
-------------	---

Application Details

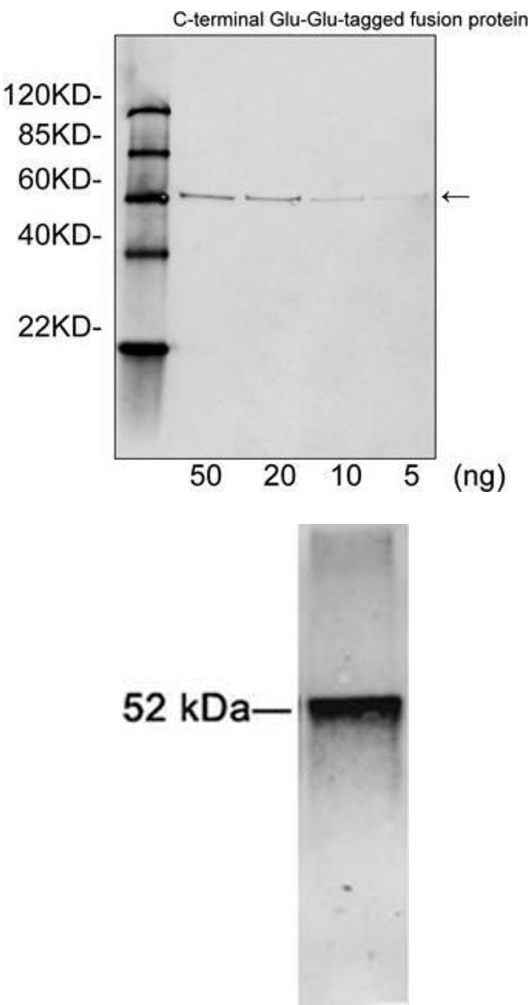
Application Notes:	Working concentrations for specific applications should be determined by the investigator. The appropriate concentrations may be affected by secondary antibody affinity, antigen concentration, detection method sensitivity, temperature, incubations length, and other factors. The suitability of this antibody for applications other than those listed below has not been determined. The following concentration ranges are starting recommendations for this product. ELISA: 0.05-0.2 µg/mL Western blot: 1-2 µg/mL Other applications: user-optimized
--------------------	---

Restrictions:	For Research Use only
---------------	-----------------------

Handling

Format:	Lyophilized
Buffer:	PBS, pH 7.4, containing 0.02 % Sodium azide
Preservative:	Sodium azide
Precaution of Use:	WARNING: Reagents contain sodium azide. Sodium azide is very toxic if ingested or inhaled. Avoid contact with skin, eyes, or clothing. Wear eye or face protection when handling. If skin or eye contact occurs, wash with copious amounts of water. If ingested or inhaled, contact a physician immediately. Sodium azide yields toxic hydrazoic acid under acidic conditions. Dilute azide-containing compounds in running water before discarding to avoid accumulation of potentially explosive deposits in lead or copper plumbing.
Storage:	4 °C/-20 °C
Storage Comment:	The antibody is stable in lyophilized form if stored at -20°C or below. The reconstituted antibody can be stored for 2-3 weeks at 2-8°C. For long term storage, aliquot and store at -20°C or below. Avoid repeated freezing and thawing cycles.

Product cited in: Sun, Ziady: "Real-time imaging of gene delivery and expression with DNA nanoparticle technologies." in: **Methods in molecular biology (Clifton, N.J.)**, Vol. 544, pp. 525-46, (2009) ([PubMed](#)).



Western Blotting

Image 1. Western blot analysis of Glu-Glu tagged fusion proteins expressed in E. coli cell lysate using Rabbit Anti-Glu-Glu-tag Polyclonal Antibody (ABIN398451, 1 µg/mL) The signal was developed with IRDye™ 800 Conjugated Goat Anti-Rabbit IgG.

Western Blotting

Image 2. Western blot analysis of Glu-Glu-tag fusion protein using 1 µg/mL Rabbit Anti-Glu-Glu-tag Polyclonal Antibody (ABIN398451) The signal was developed with IRDye™ 800 Conjugated Goat Anti-Rabbit IgG Antibody