

Datasheet for ABIN1573906
anti-CBP Tag antibody



[Go to Product page](#)

2 Images

16 Publications

Overview

Quantity:	40 µg
Target:	CBP Tag
Reactivity:	Please inquire
Host:	Rabbit
Clonality:	Polyclonal
Conjugate:	This CBP Tag antibody is un-conjugated
Application:	Western Blotting (WB), ELISA

Product Details

Immunogen:	A synthetic CBP tag peptide KRRWKKNFIAVSAANRFKKISSSGAL conjugated - KLH
Sequence:	KRRWKKNFIA VSAA
Isotype:	IgG
Specificity:	CBP-tag Antibody recognizes either internal or C-terminal CBP tagged fusion proteins.
Purification:	Immunoaffinity chromatography

Target Details

Target:	CBP Tag
Alternative Name:	CBP-Tag (CBP Tag Products)
Target Type:	Tag
Background:	Well-characterized antibodies consisting of short sequences have been widely and effectively

Target Details

used in the study of protein expression in various systems. CBP tag is a calmodulin-binding peptide, KRRWKKNFIAVSAANRFKKISSSGAL, derived from skeletal/cardiac muscle myosin light chain kinase 2. Rabbit Anti-CBP-tag Polyclonal Antibody is developed in rabbit hosts using a synthetic CBP tag peptide conjugated to KLH. CBP-tag Antibody is highly purified from rabbit antiserum by immunoaffinity chromatography and then conjugated to horseradish peroxidase. The antibody is suitable for detecting CBP fusion proteins.

Application Details

Application Notes: Working concentrations for specific applications should be determined by the investigator. The appropriate concentrations may be affected by secondary antibody affinity, antigen concentration, the sensitivity of the method of detection, temperature, the length of the incubations, and other factors. The suitability of this antibody for applications other than those listed below has not been determined. The following concentration ranges are recommended starting points for this product.

ELISA: 0.05-0.2 µg/mL Western blot: 0.1-1.0 µg/mL Western Blot Using ONE-HOUR Western™ Kit: For quick results, ONE-HOUR Western™ Kit is recommended. 10 µg of this antibody is mixed with 10 mL of WB solution for 8 cm x 8 cm membrane. Other applications: user-optimized

Restrictions: For Research Use only

Handling

Format: Lyophilized

Buffer: PBS, pH 7.4, containing 0.02 % Sodium azide

Preservative: Sodium azide

Precaution of Use: WARNING: Reagents contain sodium azide. Sodium azide is very toxic if ingested or inhaled. Avoid contact with skin, eyes, or clothing. Wear eye or face protection when handling. If skin or eye contact occurs, wash with copious amounts of water. If ingested or inhaled, contact a physician immediately. Sodium azide yields toxic hydrazoic acid under acidic conditions. Dilute azide-containing compounds in running water before discarding to avoid accumulation of potentially explosive deposits in lead or copper plumbing.

Storage: 4 °C/-20 °C

Storage Comment: The antibody is stable in lyophilized form if stored at -20°C or below. The reconstituted antibody

can be stored for 2-3 weeks at 2-8°C. For long term storage, aliquot and store at -20°C or below. Avoid repeated freezing and thawing cycles.

Publications

Product cited in:

Li, Liu, Zhang, Issaian, Hill, Espinosa, Shi, Cui, Kappel, Das, Hansen, Zhou, Zhao: "A unified mechanism for intron and exon definition and back-splicing." in: **Nature**, Vol. 573, Issue 7774, pp. 375-380, (2020) ([PubMed](#)).

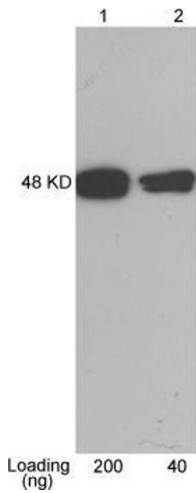
Yang, Wang, Ju, Ragab, Lundbäck, Long, Valdes-Ferrer, He, Pribis, Li, Lu, Gero, Szabo, Antoine, Harris, Golenbock, Meng, Roth, Chavan, Andersson, Billiar, Tracey, Al-Abed: "MD-2 is required for disulfide HMGB1-dependent TLR4 signaling." in: **The Journal of experimental medicine**, Vol. 212, Issue 1, pp. 5-14, (2015) ([PubMed](#)).

Park, Ménétret, Gumbart, Ludtke, Li, Whynot, Rapoport, Akey: "Structure of the SecY channel during initiation of protein translocation." in: **Nature**, Vol. 506, Issue 7486, pp. 102-6, (2014) ([PubMed](#)).

Zid, OShea: "Promoter sequences direct cytoplasmic localization and translation of mRNAs during starvation in yeast." in: **Nature**, Vol. 514, Issue 7520, pp. 117-21, (2014) ([PubMed](#)).

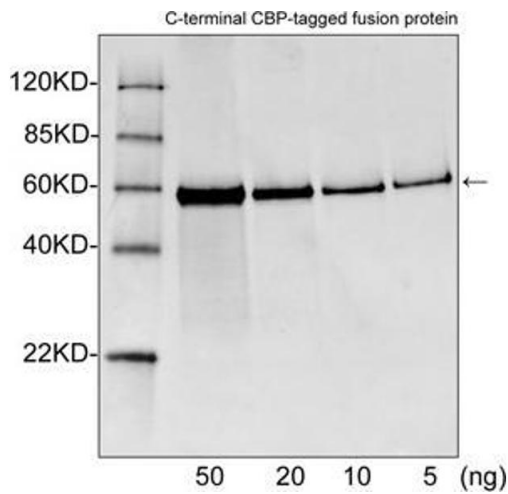
Szklarczyk, Wanschers, Nijtmans, Rodenburg, Zschocke, Dikow, van den Brand, Hendriks-Franssen, Gilissen, Veltman, Nooteboom, Koopman, Willems, Smeitink, Huynen, van den Heuvel: "A mutation in the FAM36A gene, the human ortholog of COX20, impairs cytochrome c oxidase assembly and is associated with ataxia and muscle hypotonia." in: **Human molecular genetics**, Vol. 22, Issue 4, pp. 656-67, (2013) ([PubMed](#)).

There are more publications referencing this product on: [Product page](#)



Western Blotting

Image 1. Lane 1-2: CBP tag fusion protein expressed in E. coli Cell Lysate Antibody: 1 $\mu\text{g}/\text{mL}$ Rabbit Anti-CBP-tag Polyclonal Antibody (ABIN398464) The result was developed with One-Step Western™ Basic Kit (ABIN491509)



Western Blotting

Image 2. Western blot analysis of CBP tagged fusion proteins expressed in E. coli cell lysate using Rabbit Anti-CBP-tag Polyclonal Antibody (ABIN398464, 1 $\mu\text{g}/\text{mL}$) The signal was developed with IRDy™ 800 Conjugated Goat Anti-Rabbit IgG.