



[Go to Product page](#)

Datasheet for ABIN1573910  
**anti-Protein C Tag antibody**

2 Images

2 Publications

### Overview

Quantity:	40 µg
Target:	Protein C Tag
Reactivity:	Please inquire
Host:	Rabbit
Clonality:	Polyclonal
Conjugate:	This Protein C Tag antibody is un-conjugated
Application:	Western Blotting (WB), ELISA

### Product Details

Immunogen:	Protein C epitope tag peptide CEDQVDPRLIDGK conjugated - KLH
Isotype:	IgG
Specificity:	This Antibody recognizes C-terminal, N-terminal, and internal Protein C tagged fusion proteins.
Purification:	Immunoaffinity chromatography

### Target Details

Target:	Protein C Tag
Abstract:	<a href="#">Protein C Tag Products</a>
Target Type:	Tag
Background:	Rabbit Anti-Protein C (HPC4)-tag is highly purified from rabbit antiserum by immunoaffinity chromatography and is supplied as a 40 µg aliquot at a concentration of 1 mg/ml in PBS,

## Target Details

---

pH7.4, containing 0.02% Sodium azide.

## Application Details

---

**Application Notes:** Working concentrations for specific applications should be determined by the investigator. The appropriate concentrations may be affected by secondary antibody affinity, antigen concentration, the sensitivity of the method of detection, temperature, the length of the incubations, and other factors. The suitability of this antibody for applications other than those listed below has not been determined. The following concentration ranges are recommended starting points for this product.

ELISA: 0.05-0.2 µg/mL

Western blot: 0.1-1.0 µg/mL Western Blot Using ONE-HOUR Western™ Kit: For quick results, ONE-HOUR Western™ Complete Kit (Rabbit) is recommended. 10 µg of this antibody is mixed with 10 mL of WB solution for 8 cm X 8 cm membrane. Other applications: user-optimized

**Restrictions:** For Research Use only

## Handling

---

**Format:** Lyophilized

**Buffer:** PBS, pH 7.4, containing 0.02 %Sodium azide

**Preservative:** Sodium azide

**Precaution of Use:** WARNING: Reagents contain sodium azide. Sodium azide is very toxic if ingested or inhaled. Avoid contact with skin, eyes, or clothing. Wear eye or face protection when handling. If skin or eye contact occurs, wash with copious amounts of water. If ingested or inhaled, contact a physician immediately. Sodium azide yields toxic hydrazoic acid under acidic conditions. Dilute azide-containing compounds in running water before discarding to avoid accumulation of potentially explosive deposits in lead or copper plumbing.

**Storage:** 4 °C/-20 °C

**Storage Comment:** The antibody is stable in lyophilized form if stored at -20°C or below. The reconstituted antibody can be stored for 2-3 weeks at 2-8°C. For long term storage, aliquot and store at -20°C or below. Avoid repeated freezing and thawing cycles.

## Publications

Product cited in:

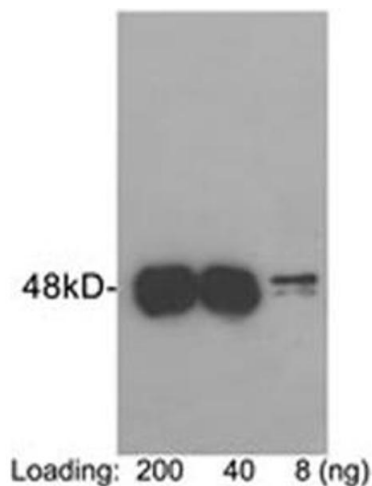
Zhao, Chen, Li, Wei, Tong, Jia, Kong, Xia, Dai: "SC-III3, a novel scopoletin derivative, induces cytotoxicity in hepatocellular cancer cells through oxidative DNA damage and ataxia telangiectasia-mutated nuclear protein kinase activation." in: **BMC cancer**, Vol. 14, pp. 987, (2015) ([PubMed](#)).

Wang, Chen, Li, Liu, Zhang, Xia, Yu, You, Xiang, Lu, Yao, Borjigin, Yang, Wangenstein, He, Wang, Hu: "Reversal of hepatocyte senescence after continuous in vivo cell proliferation." in: **Hepatology (Baltimore, Md.)**, Vol. 60, Issue 1, pp. 349-61, (2014) ([PubMed](#)).

Zhang, Yang, Jia, Liu, Guo, Lu, Chen, Ma, Wang, Zhou: "ISL-1 is overexpressed in non-Hodgkin lymphoma and promotes lymphoma cell proliferation by forming a p-STAT3/p-c-Jun/ISL-1 complex." in: **Molecular cancer**, Vol. 13, pp. 181, (2014) ([PubMed](#)).

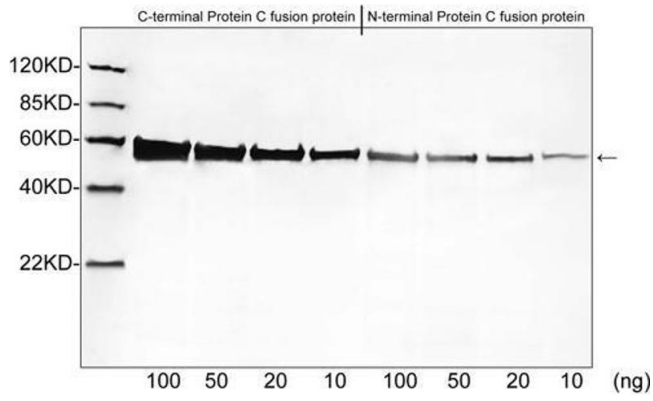
Nakai, Yoneda, Hosokawa, Moriue, Presland, Fallon, Kabashima, Kosaka, Kubota: "Reduced expression of epidermal growth factor receptor, E-cadherin, and occludin in the skin of flaky tail mice is due to filaggrin and loricrin deficiencies." in: **The American journal of pathology**, Vol. 181, Issue 3, pp. 969-77, (2012) ([PubMed](#)).

## Images



### Western Blotting

**Image 1.** Loading: Protein C tag fusion protein expressed in E. coli cell lysate  
Antibody: Rabbit Anti-Protein C (HPC4) -tag Polyclonal Antibody (ABIN398468) The result was developed with One-Step Western™ Complete Kit (Rabbit) (ABIN491509)



### Western Blotting

**Image 2.** Western blot analysis of Protein C tagged fusion proteins expressed in *E. coli* cell lysate using Rabbit Anti-Protein C-tag Polyclonal Antibody (ABIN398468, 1  $\mu\text{g}/\text{mL}$ ) The signal was developed with IRDye<sup>TM</sup> 800 Conjugated Goat Anti-Rabbit IgG.