



Datasheet for ABIN1573943
anti-Protein A antibody (HRP)



[Go to Product page](#)

1 Image

3 Publications

Overview

Quantity:	40 µg
Target:	Protein A
Reactivity:	Staphylococcus aureus
Host:	Chicken
Clonality:	Polyclonal
Conjugate:	This Protein A antibody is conjugated to HRP
Application:	ELISA, Western Blotting (WB)

Product Details

Immunogen:	Purified recombinant protein A
Isotype:	IgG
Specificity:	Chicken Anti-Protein A [HRP] Polyclonal Antibody is specific to protein A.

Target Details

Target:	Protein A
Alternative Name:	ProteinA (Protein A Products)
Background:	Chicken Anti-Protein A [HRP] Polyclonal Antibody is developed in chicken host animals using purified recombinant protein A. Chicken anti-Protein A [HRP] is highly purified from chicken yolks by immunoaffinity chromatography and then conjugated to horseradish peroxidase. Chicken anti-Protein A is suitable for ELISA and immunoblotting.

Application Details

Application Notes: Working concentrations for specific applications should be determined by the investigator. The appropriate concentrations may be affected by secondary antibody affinity, antigen concentration, the sensitivity of the method of detection, temperature, the length of the incubations, and other factors. The suitability of this antibody for applications other than those listed below has not been determined. The following concentration ranges are recommended starting points for this product.

ELISA: 0.05-0.2 µg/mL

Western blot: 0.05-1.0 µg/mL

Other applications: user-optimized

Restrictions: For Research Use only

Handling

Format: Liquid

Buffer: PBS, pH 7.4, containing 1 % BSA and 0.01 % thimerosal

Preservative: Thimerosal (Merthiolate)

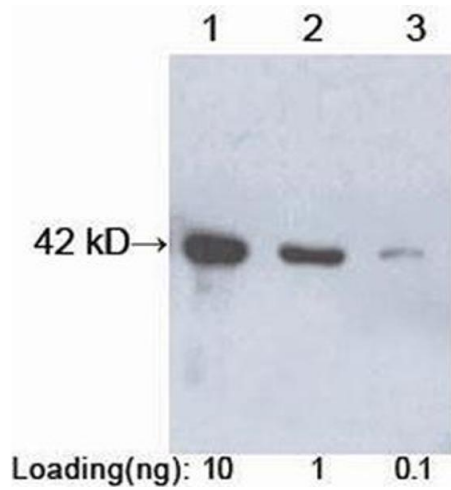
Precaution of Use: This product contains thimerosal (merthiolate): a POISONOUS AND HAZARDOUS SUBSTANCE which should be handled by trained staff only.

Storage: 4 °C/-20 °C

Storage Comment: The antibody is stable for 2-3 weeks if stored at 2-8°C. For long term storage, aliquot and store at -20°C or below. Avoid repeated freezing and thawing cycles.

Publications

Product cited in: Sun, Ziady: "Real-time imaging of gene delivery and expression with DNA nanoparticle technologies." in: **Methods in molecular biology (Clifton, N.J.)**, Vol. 544, pp. 525-46, (2009) ([PubMed](#)).



Western Blotting

Image 1. Lane 1-3: Recombinant Protein A (~42 kD)
Primary antibody: 0.1 µg/mL Chicken Anti-Protein A [HRP] Polyclonal Antibody (ABIN398528) The signal was developed with LumiSensor™ HRP Substrate Kit (ABIN769939)